

## WORKER INFORMATION SHEET

# Have your say in the future of the residential care workforce

Hello from PeakCare's Catalyst for Care program team!

You might have heard from PeakCare when you undertook Hope & Healing – Residential Care training.

PeakCare and the Queensland Government are developing a workforce strategy to support the right conditions to attract, train and retain the residential care workforce now and into the future.

We are encouraging you to participate in a survey to identify what matters most to you in your role, and your support and development.

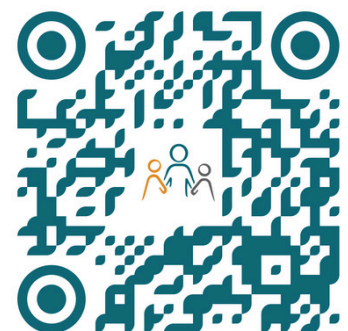
At the end of this survey, you will be provided with the option to leave an email address to receive updates from us. **If you do so by 31st October you will go into the running to win one of ten \$50 gift cards.**

We want this survey to be an opportunity for you to have your say on how we can improve residential care together.

Thank you for all that you do – you are making a real difference, and we want to work alongside you.

Take a look at the below FAQs or contact the program team at [workforce@peakcare.org.au](mailto:workforce@peakcare.org.au)

Access the survey at the QR code here or view PeakCare's privacy policy at [peakcare.org.au/peakcare-privacy-policy](https://peakcare.org.au/peakcare-privacy-policy)



# Have your say in the future of the residential care workforce

## **Why should I participate in this survey?**

This survey is the first opportunity to have your voice heard in shaping the future of residential care in Queensland as a worker.

## **Does this survey ask personal questions?**

We will be collecting information about yourself and your experiences so that we can better understand how to support you in your role. Many questions will be skippable if you do not wish to answer.

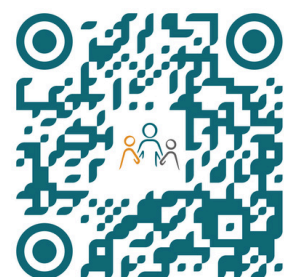
## **How long will the survey take?**

The survey will take approximately 20 minutes.

## **Are the responses anonymous?**

We are committed to protecting your privacy and confidentiality. Any responses you provide will be captured, even if the survey is not completed, and may be used in analysis. Any data used for publications, reports or presentations will be aggregated and anonymised. This means that your personal data will be combined with other data and stripped of identifiers, ensuring that individual responses cannot be traced back to you.

Access the survey



FAQ

# Have your say in the future of the residential care workforce

## **Will my employer or anyone else know what I have said?**

Your employer will not have access to any of your responses or data.

## **Will this impact my job?**

Participation in this survey is entirely voluntary and we are requesting your employer to support you in taking part if you want to. Your responses or time taken to complete the survey will not affect your job and your responses will not be available to your employer. We are seeking to understand who you are and how we can better support you to feel valued in your role.

## **Will PeakCare be able to see my personal information?**

PeakCare will be able to see your responses for research purposes only.

## **Does this impact my Hope & Healing enrolment?**

This survey will help us to understand how we can develop a workforce strategy to better meet the needs of all Queenslanders. Participation is not related to your enrolment in Hope & Healing and will not impact your progress or transcript in any way.

Access the survey

