

Demographic Outlook

Why the sector faces systemic change

April 2024

Contents page

1. Introduction, background & scope	3
2. Executive Summary	4
3. Systemic Changes	5
4. Indigenous Data	25
5. Overview: Personas	35
• Healthcare workers	39
• Social Service Workers	42
• Teachers	45
• Same-sex Couples	48
• Empty Nesters	54
• Parents	57
• Faith	60
• Volunteers	64
• Single Incomes	68
5. TDG Team & Disclaimer	72

Introduction, background & scope

Following on from the work that The Demographics Group (TGP) completed for OzChild in November 2023, PeakCare approached TDG to complete a similar report that was specific to the Queensland foster carer market. Like OzChild, PeakCare recognises that a data driven evidence base is critical to good decision making and want to understand how Queensland's changing demographic and socio-economic landscape may impact the foster carer market.

In this report TDG has researched, extracted and analysed demographic and socio-economic variables that relate to the foster carer market and provided insight into how these variables have changed and are likely to continue to change into the future.

The report is segmented into three sections which are focused on big picture demographics, the hard criteria that must be met in order to becoming a foster carer in Queensland and the personas of a typical foster carer. Data is also provided for the Indigenous population where available.

The data in the report is based on the Australian Bureau of Statistics (ABS) remoteness statistical boundaries which are particularly relevant to Queensland due to the geographic dispersion of the population. The main data source is the Australian Bureau of Statistics (ABS), including current and past Population and Housing Censuses. Where appropriate data is benchmarked against the national or Queensland average for context and comparative purposes.

Systemic Changes & Personas

PeakCare provided TDG with criteria that must be met in order to become a foster carer. This report aligns the criteria to demographic variables that are used as a proxy in this report and include:

- 21 years of age or older
- Spare bedroom (not critical in Queensland)
- Financially stable position
- Have time/be flexible to care for vulnerable children and young people
- Mentally, emotionally and physically fit to care

This report also contains insight into the 'personas' of a typical foster carer (primarily based on the persona profiles provided by OzChild). We have provided data and insight into these personas in this report by extracting, analysing and undertaking cross tabulation of data from the ABS Censuses. The analysis for the personas is geographically segmented based the remoteness boundaries and for each persona, provides the top 10 SA2s which contain the highest number and proportion of that persona.

Further to these insights, the report also contains additional demographic variables that relate to, and can be applied to, the different personas, together with the hard criteria, as outlined below:

- Population: current and forecast population and population change and distribution across Queensland
- Household and Family structure: size and composition of households including family structure
- Number of bedrooms: cross-tabulation of the number of bedrooms by age cohort to identify the number of households that have a spare bedroom by different stages of the lifecycle
- Financial stability: insight into mortgage repayments and how these have changed over time to provide insight into financial stability
- Workforce: employment trends towards to a knowledge worker economy and the identification of specific industries and occupations that relate directly to the personas, including healthcare workers, teachers, social services, hospitality & retail workers, part-time workers and those not in the workforce, to quantify the size of these markets
- Religious affiliation, volunteer, care giving & long-term health issues: insight into religious affiliation, volunteers, care giving and long-term health issues of the total population and as they relate to specific personas.

Report summary

At first glance, demographic data might suggest a great decade ahead for the recruitment of foster carers. After all, Queensland experiences very strong population growth in all age groups in the coming decade. The age cohort of foster children (0-17) grows at a much lower rate (+4 per cent) than the age cohort (18+) of potential foster carers (+17 per cent).

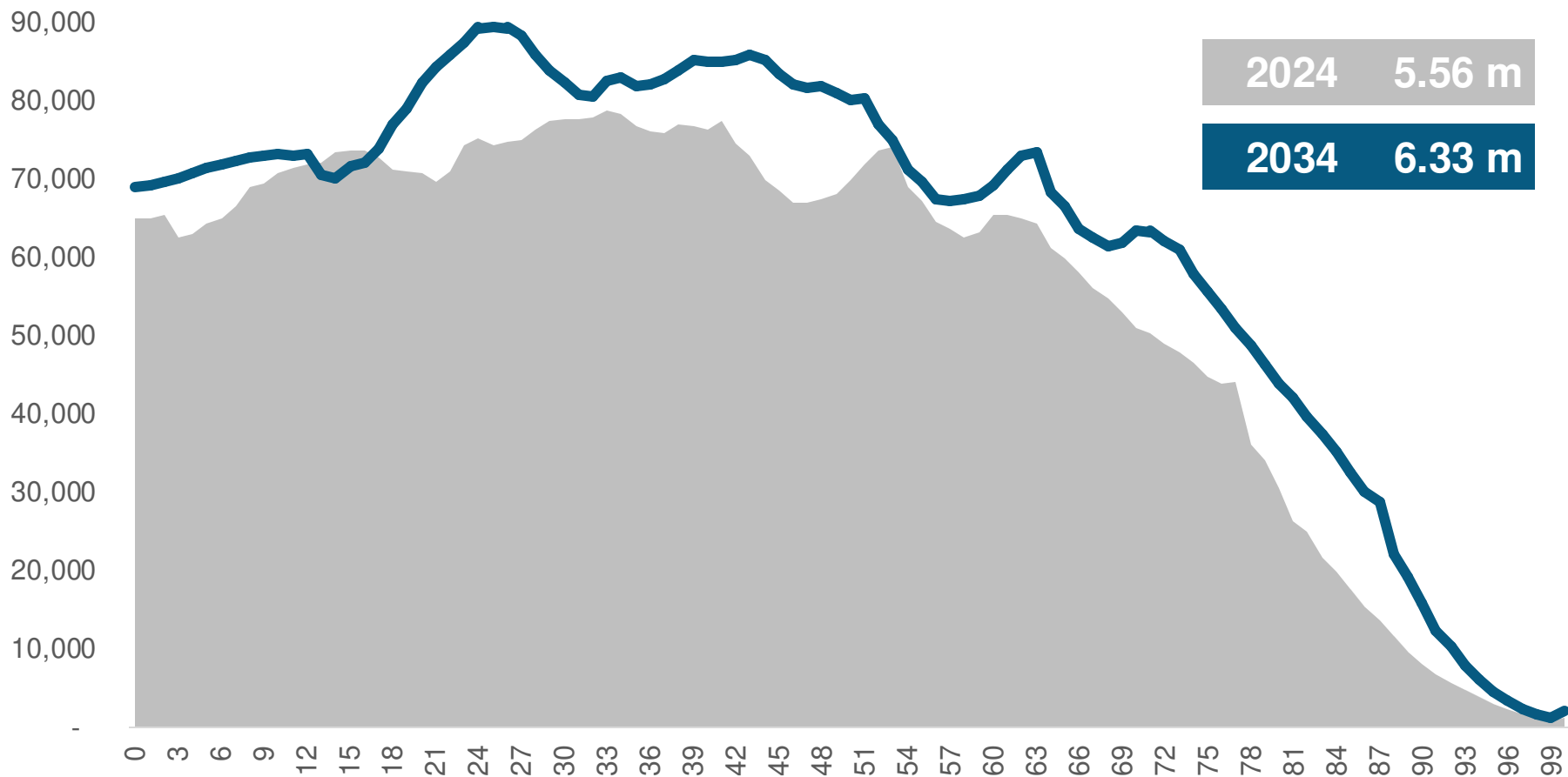
A closer look at demographic data unfortunately shows a different picture. Rising costs of living, changing social trends, fewer available spare bedrooms, generational value shifts, an increased geographical separation of potential foster carers and foster children, and a declining middle-class suggest a drying up of the pool of potential foster carers in Queensland.

In this environment, relying on old ways of recruiting foster carers is unlikely to be successful at the scale needed. Therefore, systemic reform is crucial. This could include professionalising and financing foster care differently or even exploring potential preventative measures.

The following pages show 55 slides explaining the demographic future of Queensland. A written narrative explaining how these pieces of data fit together and how this makes recruiting of foster carers harder in the coming decade is provided separately.

Systemic changes

By 2034 Qld will be bigger, more youthful, and older



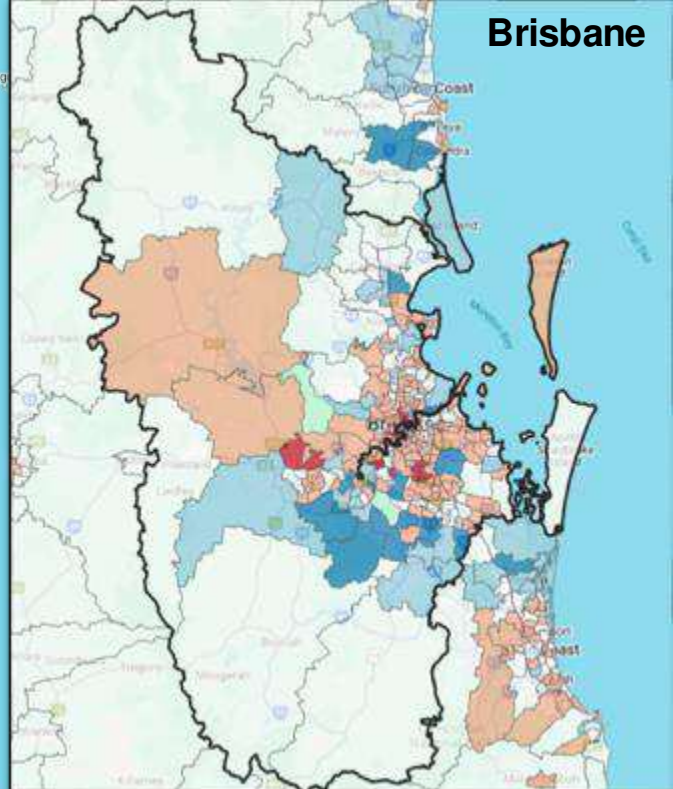
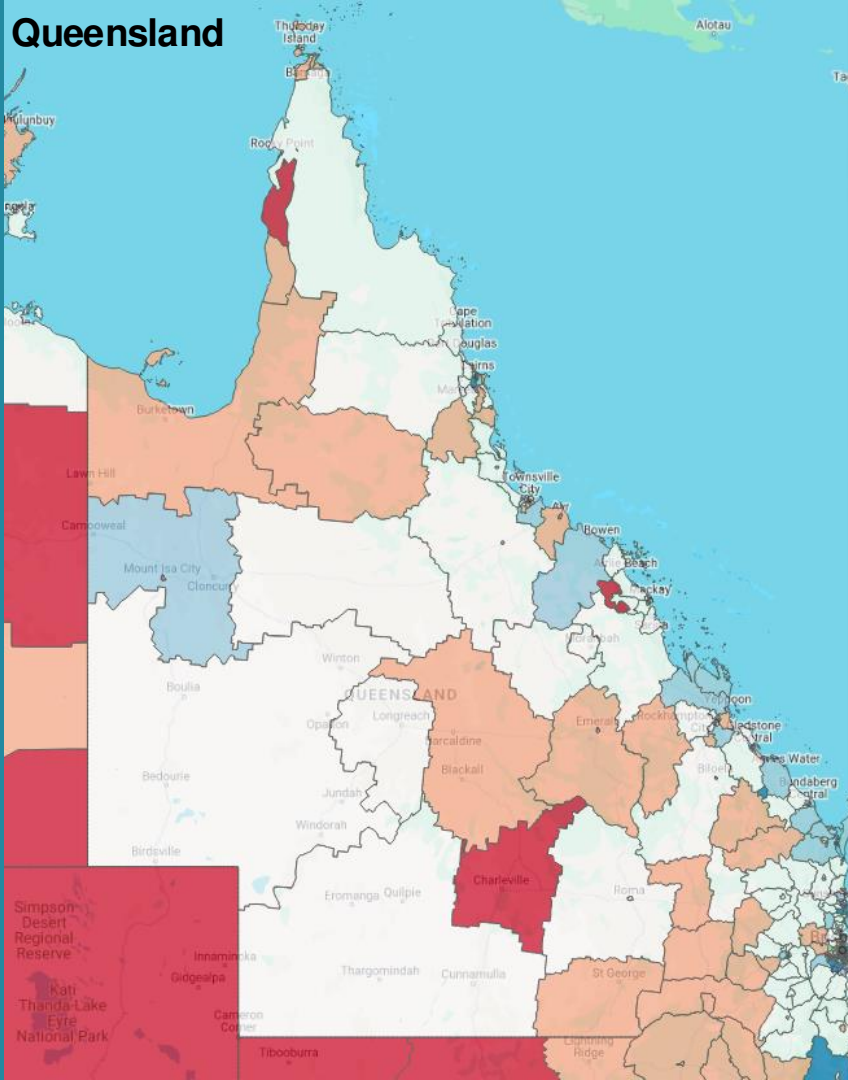
Queensland

Brisbane

Lots of negative population growth at start of pandemic:

June 2020 to June 2021

Population change June 2020 to June 2021 by SA2; ABS



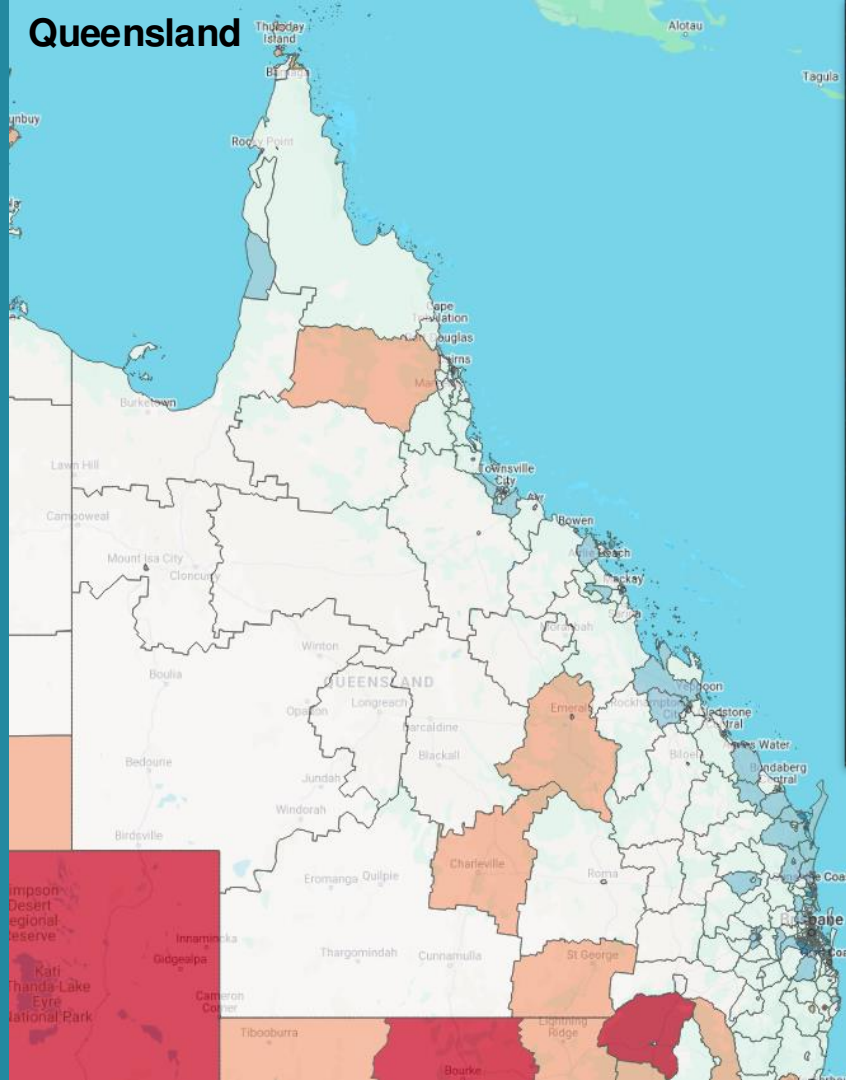
- Less than 2%
- 2% - 0%
- 0% - 2%
- 2% - 7%
- More than 7%

Quick recovery of population growth during pandemic:

June 2021 to June 2022






Population change June 2021 to June 2022 by SA2; ABS

Queensland



Brisbane



-  Less than 2%
-  -2% - 0%
-  0% - 2%
-  2% - 7%
-  More than 7%

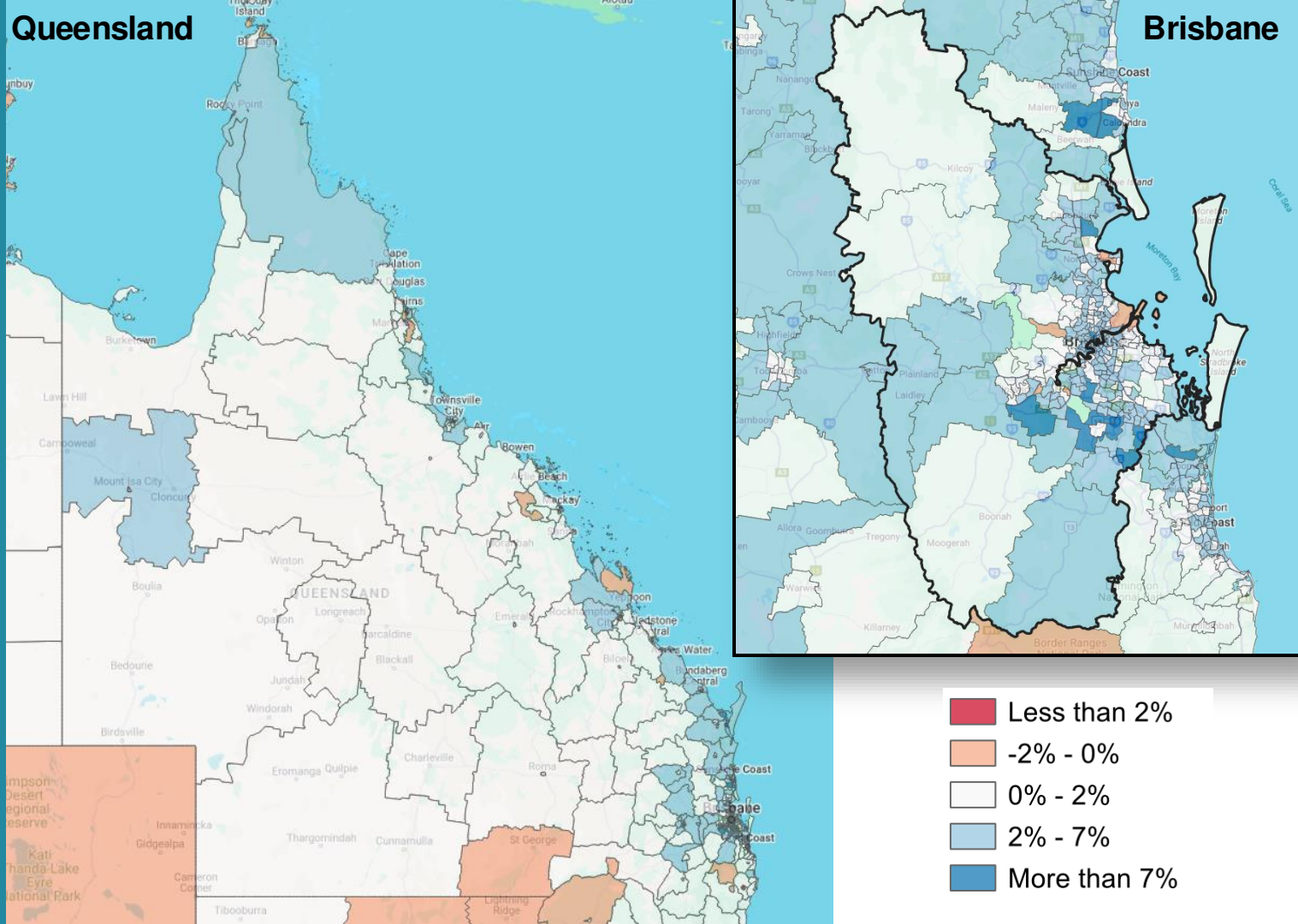
Queensland

Brisbane

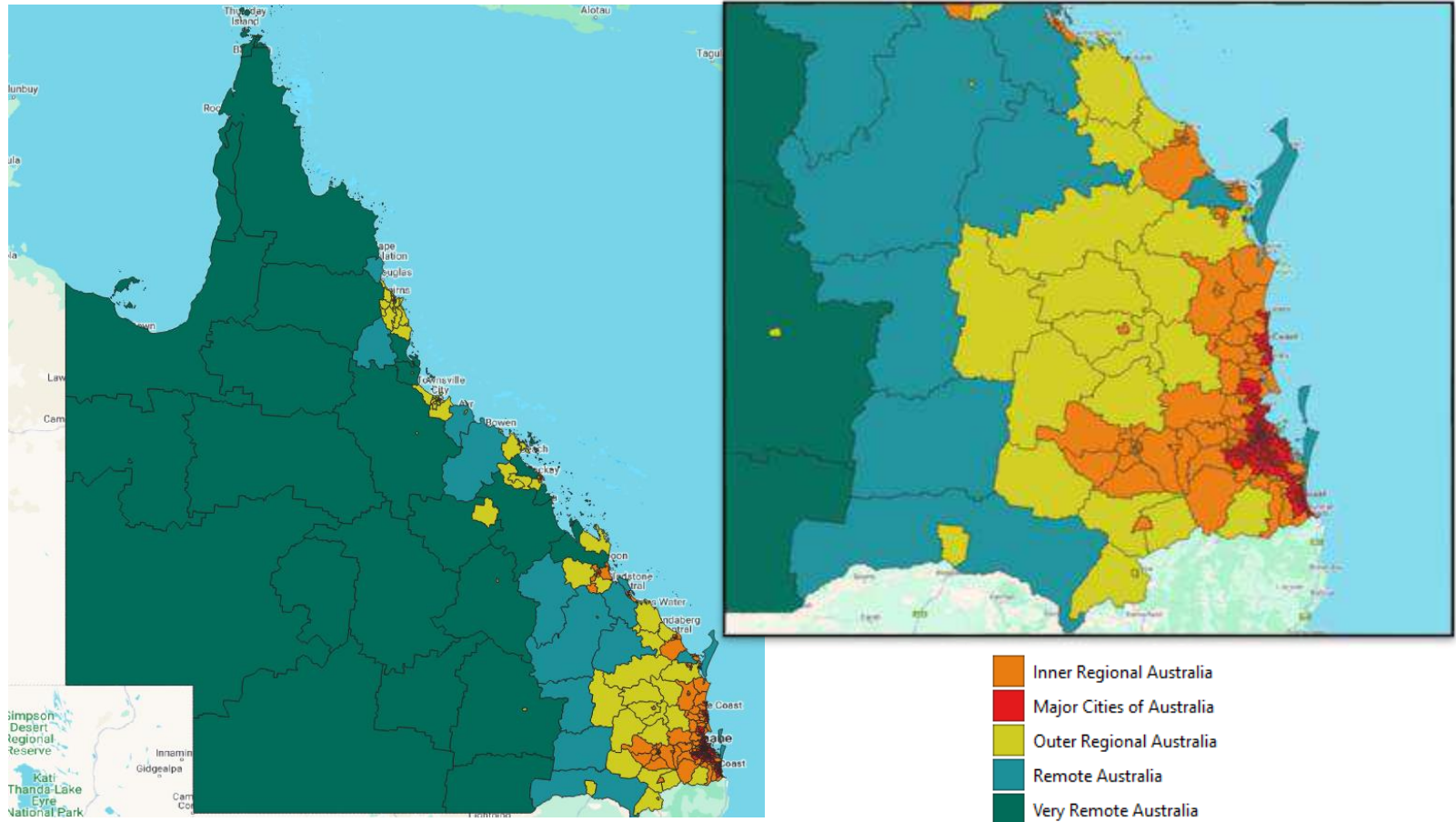
Population now booms across the state:

June 2022 to June 2023

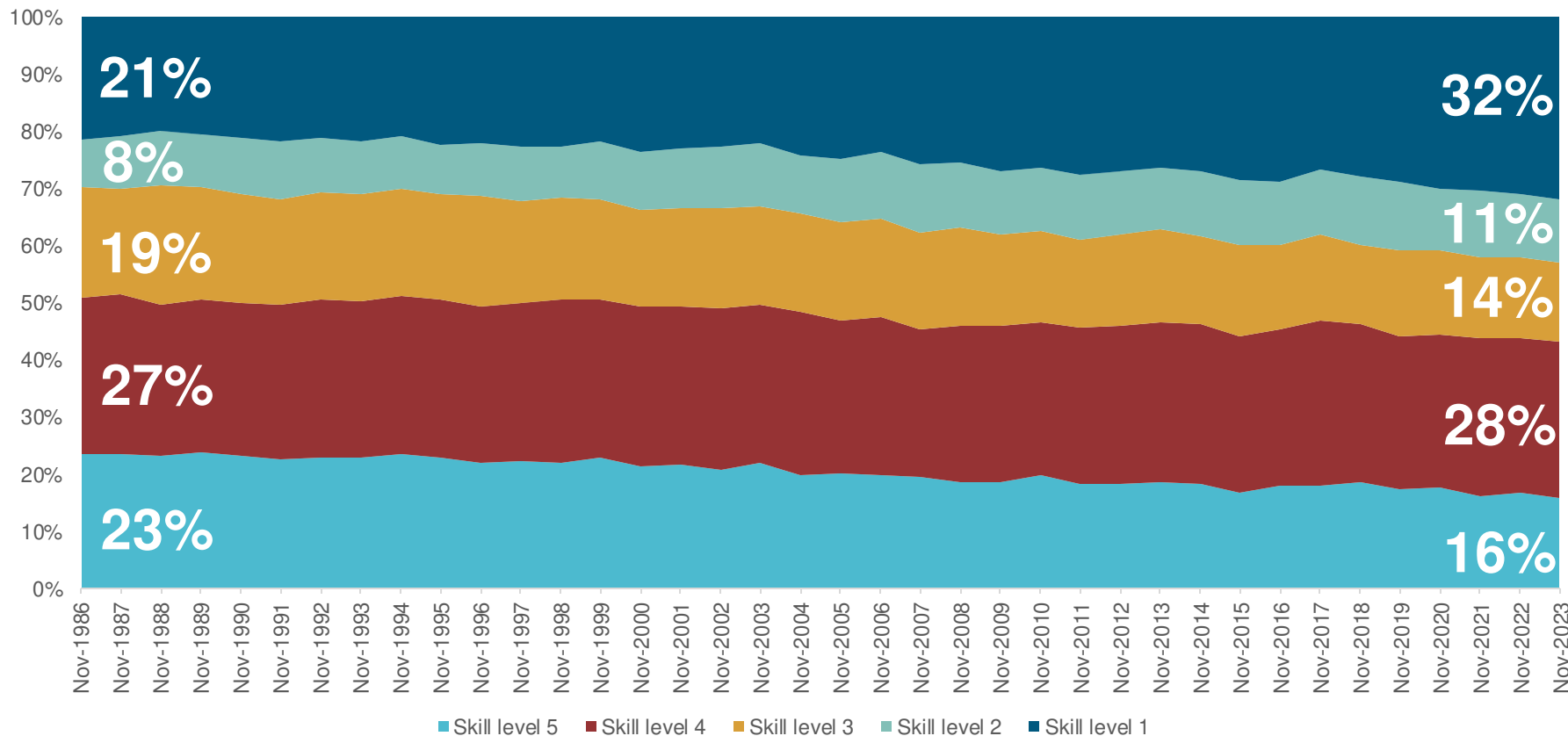
Population change June 2021 to June 2022 by SA2; ABS



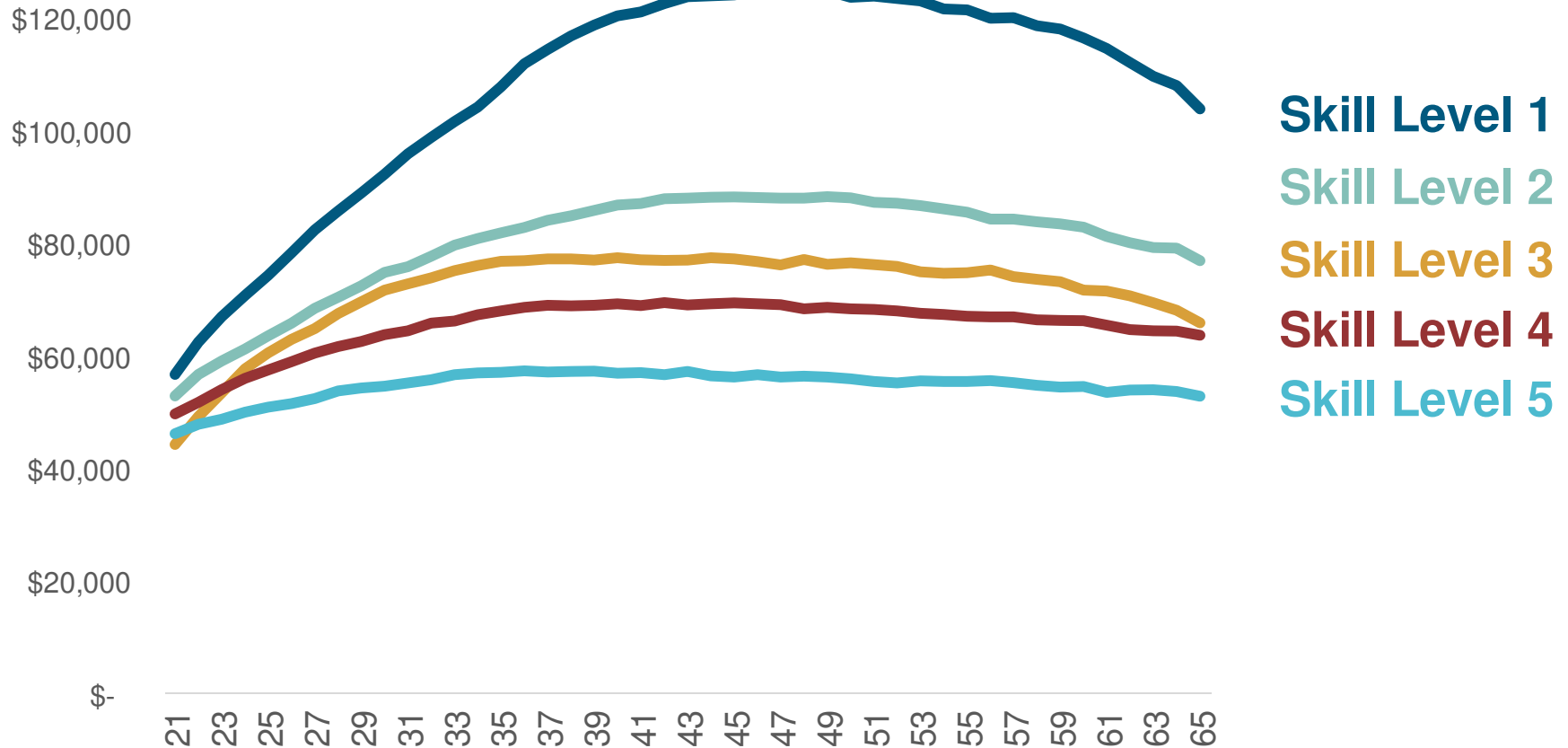
Remoteness regions of Queensland used in this report



Qld continues to transform into a knowledge economy

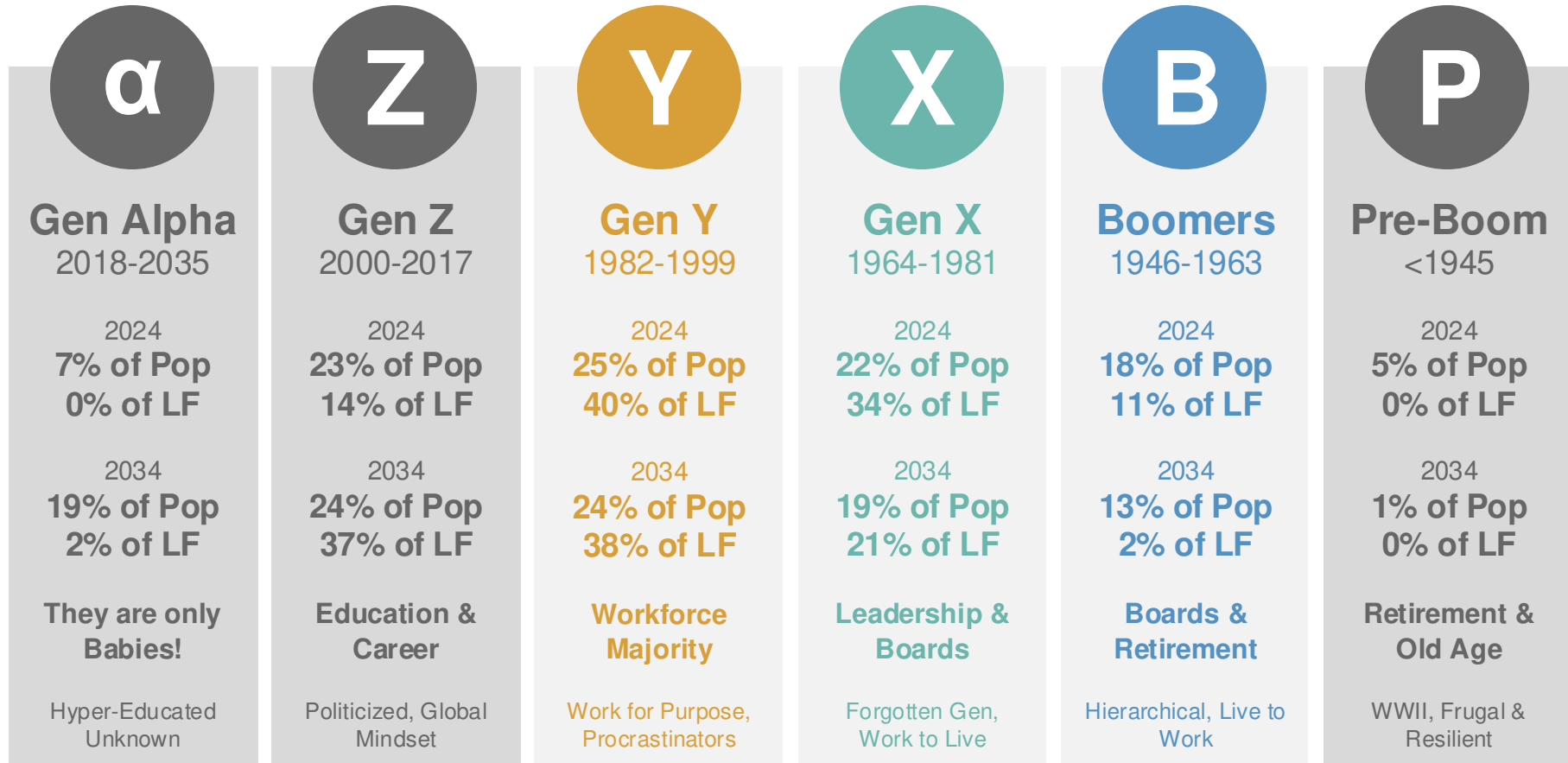


Skill level 3 (TAFE) jobs open the door to the middle-class



Median income for full-time employed workers in Australia by age and skill level; ABS Census 2021

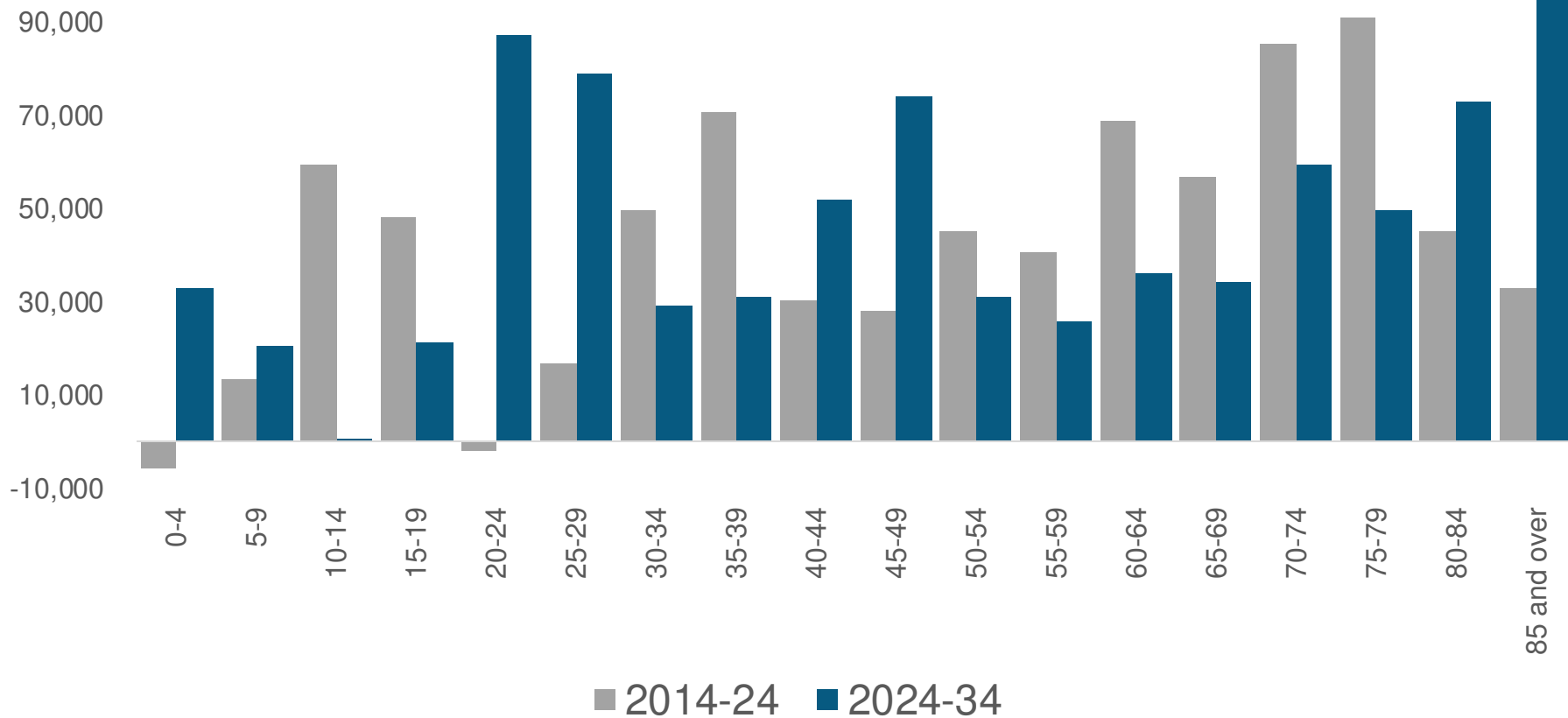
New values shape the foster parent age bracket in Qld



Queensland's population (Pop) and labour force (LF) by generation (2024 & 2034)

Data sourced from the ABS and the Centre for Population

Millennials (40s) most relevant growth cohort but hard to attract



In the last decade Qld became more culturally diverse

Rank	Country of birth	Population 2011		Rank	Country of birth	Population 2021	
1	Australia	3,192,114	74%	1	Australia	3,679,877	72%
2	New Zealand	192,028	4.4%	2	New Zealand	208,591	4.1%
3	England	179,377	4.2%	3	England	191,724	3.7%
4	South Africa	35,529	0.8%	4	India	71,845	1.4%
5	India	30,281	0.7%	5	China	55,709	1.1%
6	Philippines	29,469	0.7%	6	Philippines	51,570	1.0%
7	China	27,052	0.6%	7	South Africa	49,677	1.0%
8	Scotland	24,026	0.6%	8	Vietnam	24,430	0.5%
9	Germany	21,059	0.5%	9	Scotland	22,826	0.4%
10	Vietnam	16,161	0.4%	10	Germany	21,020	0.4%
Total Qld		4,320,769		Total Qld		5,144,201	

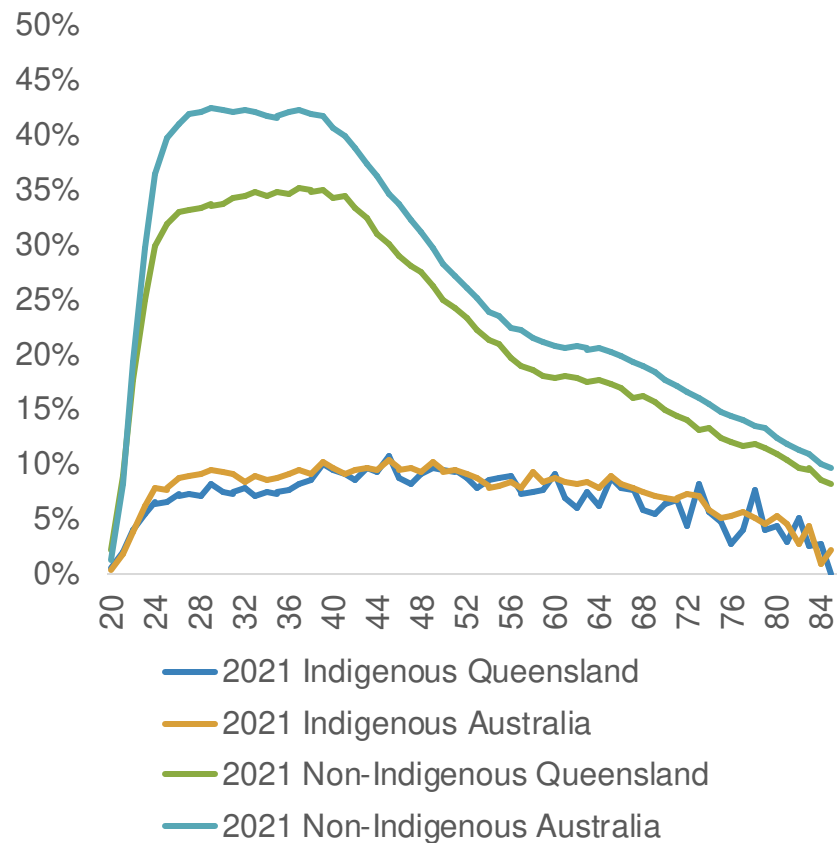
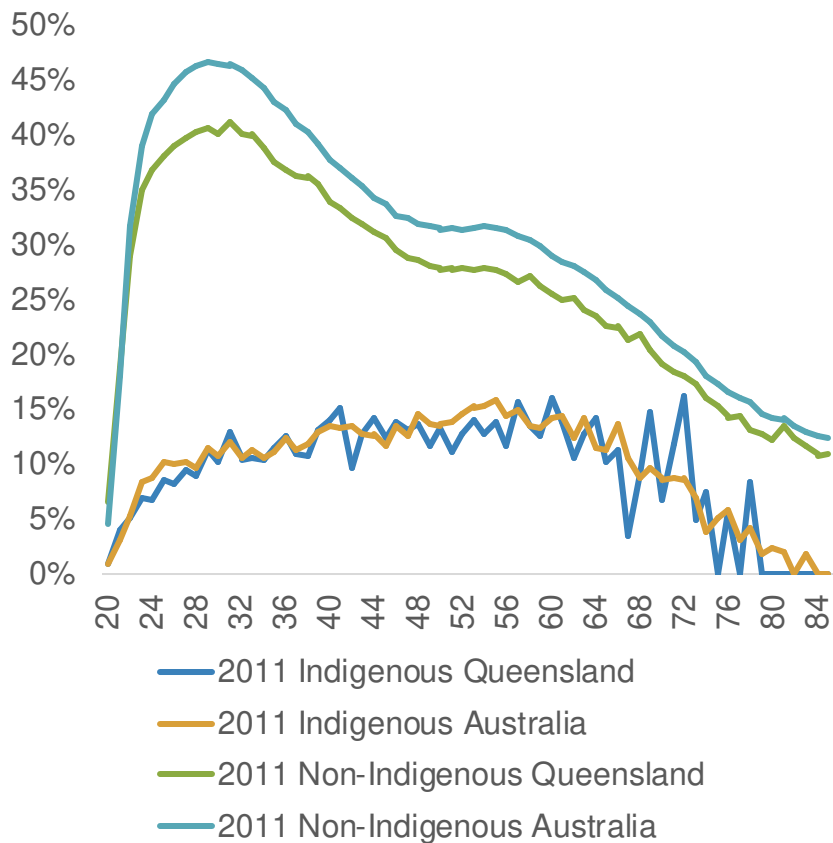
More diverse language needs in Qld will be a challenge

Rank	Language spoken at home	Population 2011		Rank	Language spoken at home	Population 2021	
1	English	3,675,958	85%	1	English	4,151,206	81%
2	Mandarin	38,116	0.9%	2	Mandarin	83,607	1.6%
3	Cantonese	22,258	0.5%	3	Vietnamese	31,370	0.6%
4	Vietnamese	21,852	0.5%	4	Punjabi	30,873	0.6%
5	Italian	21,711	0.5%	5	Spanish	29,642	0.6%
6	German	16,352	0.4%	6	Cantonese	27,437	0.5%
7	Spanish	15,602	0.4%	7	Korean	21,904	0.4%
8	Hindi	13,188	0.3%	8	Hindi	21,344	0.4%
9	Japanese	13,086	0.3%	9	Tagalog	20,603	0.4%
10	Samoan	12,809	0.3%	10	Italian	17,989	0.3%
Total Qld		4,320,769		Total Qld		5,144,201	

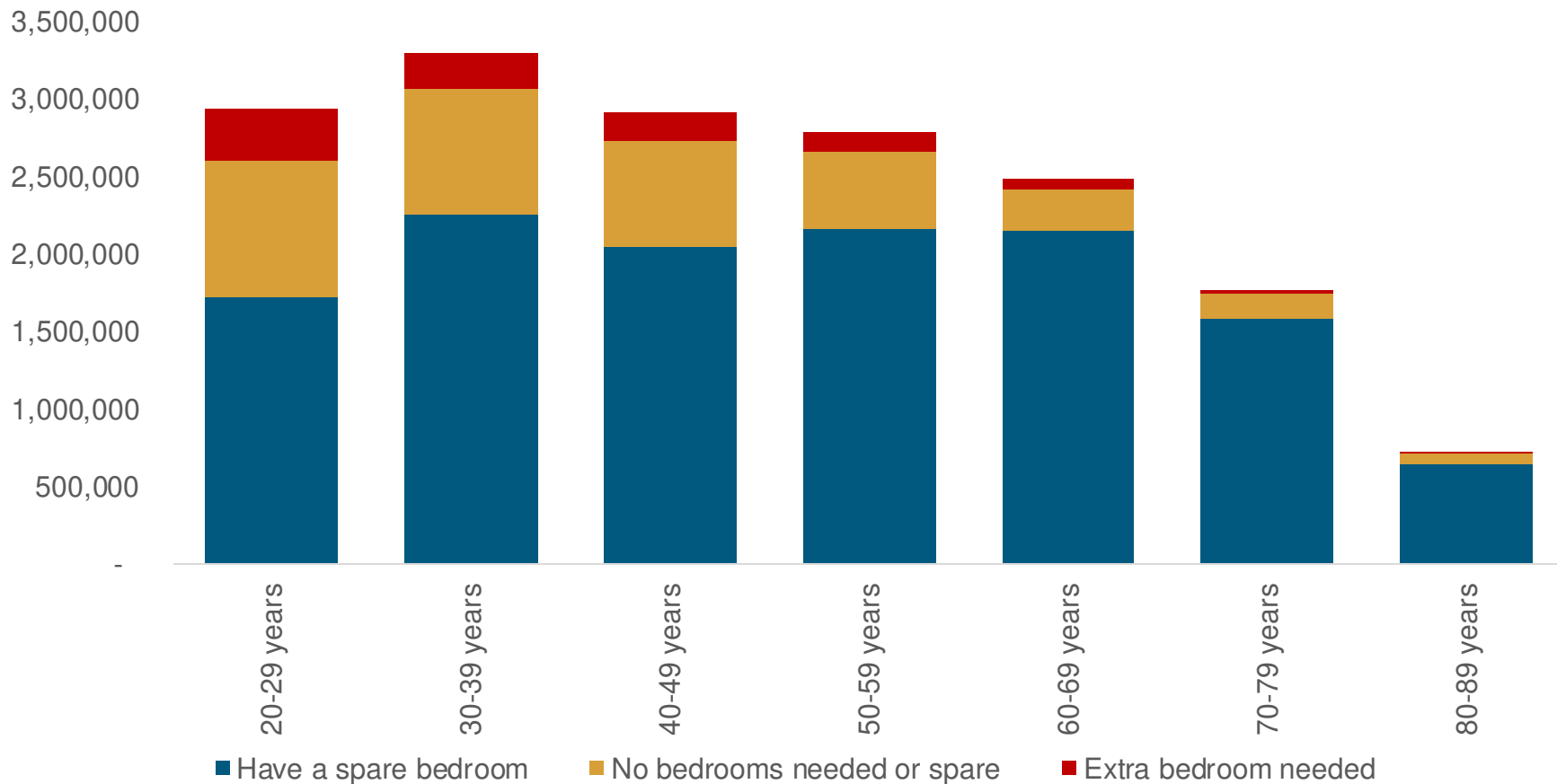
More people experience mortgage stress



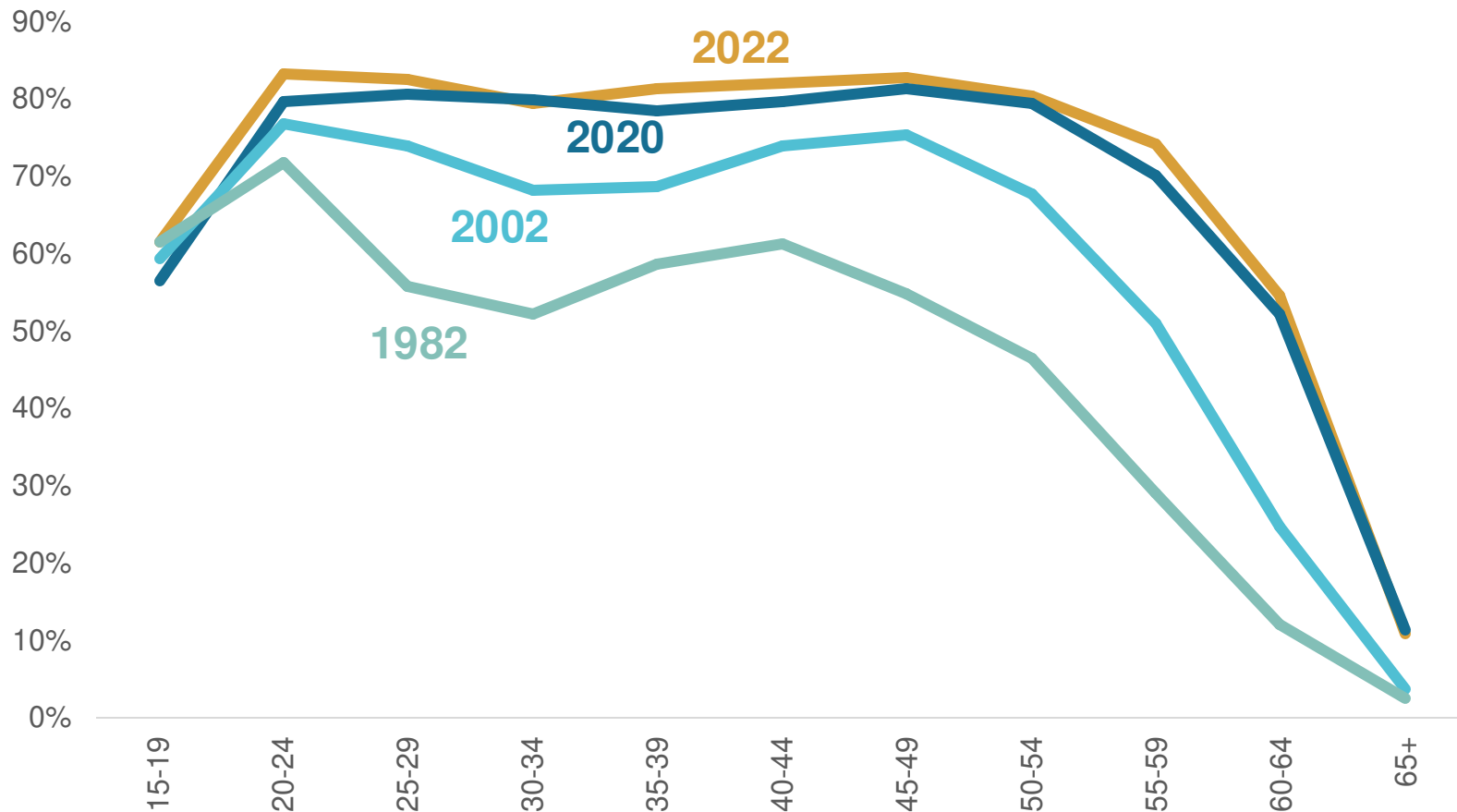
Qld is less educated than the national average



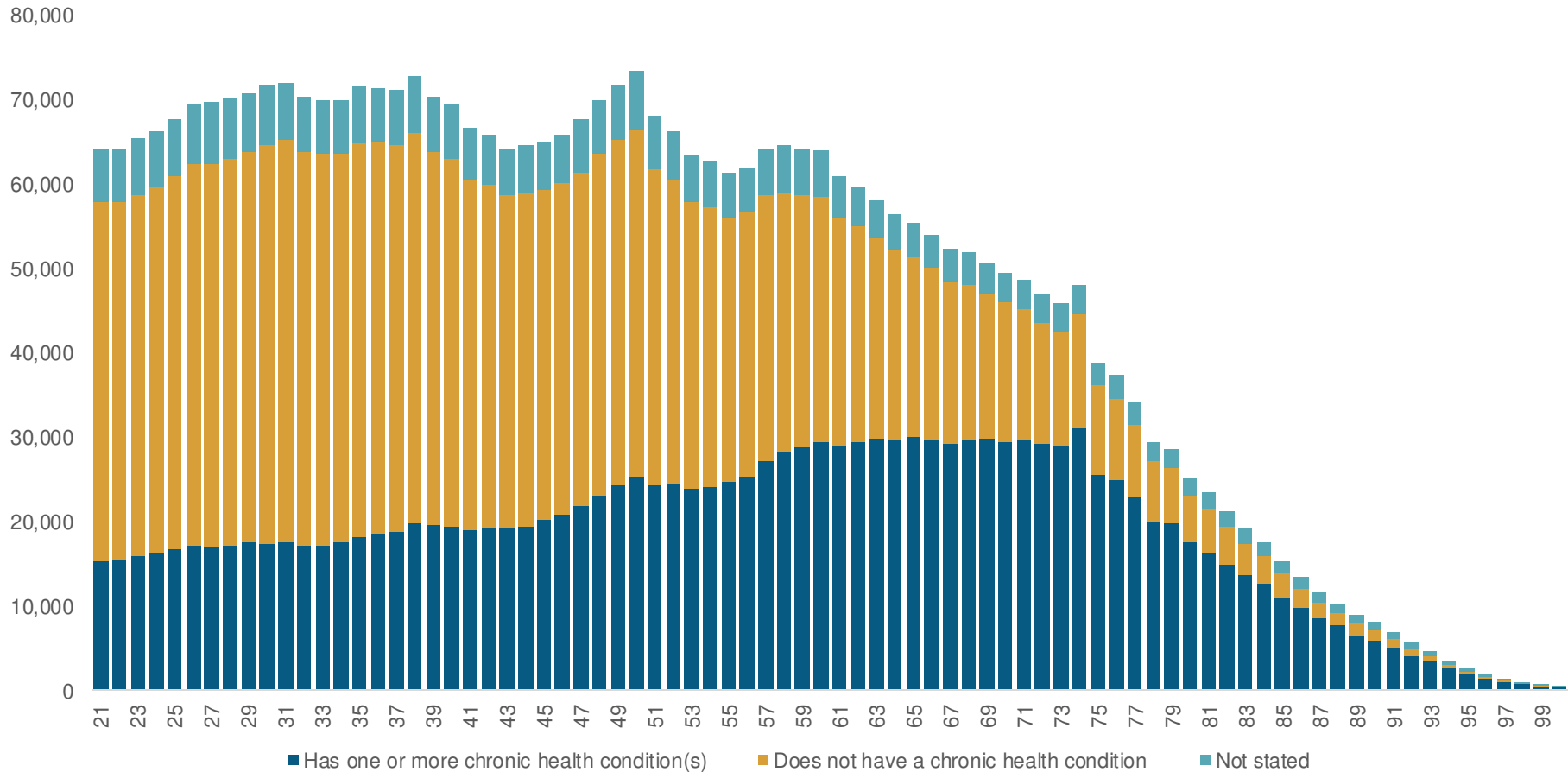
Folks in their 40s lose spare bedrooms to their own kids



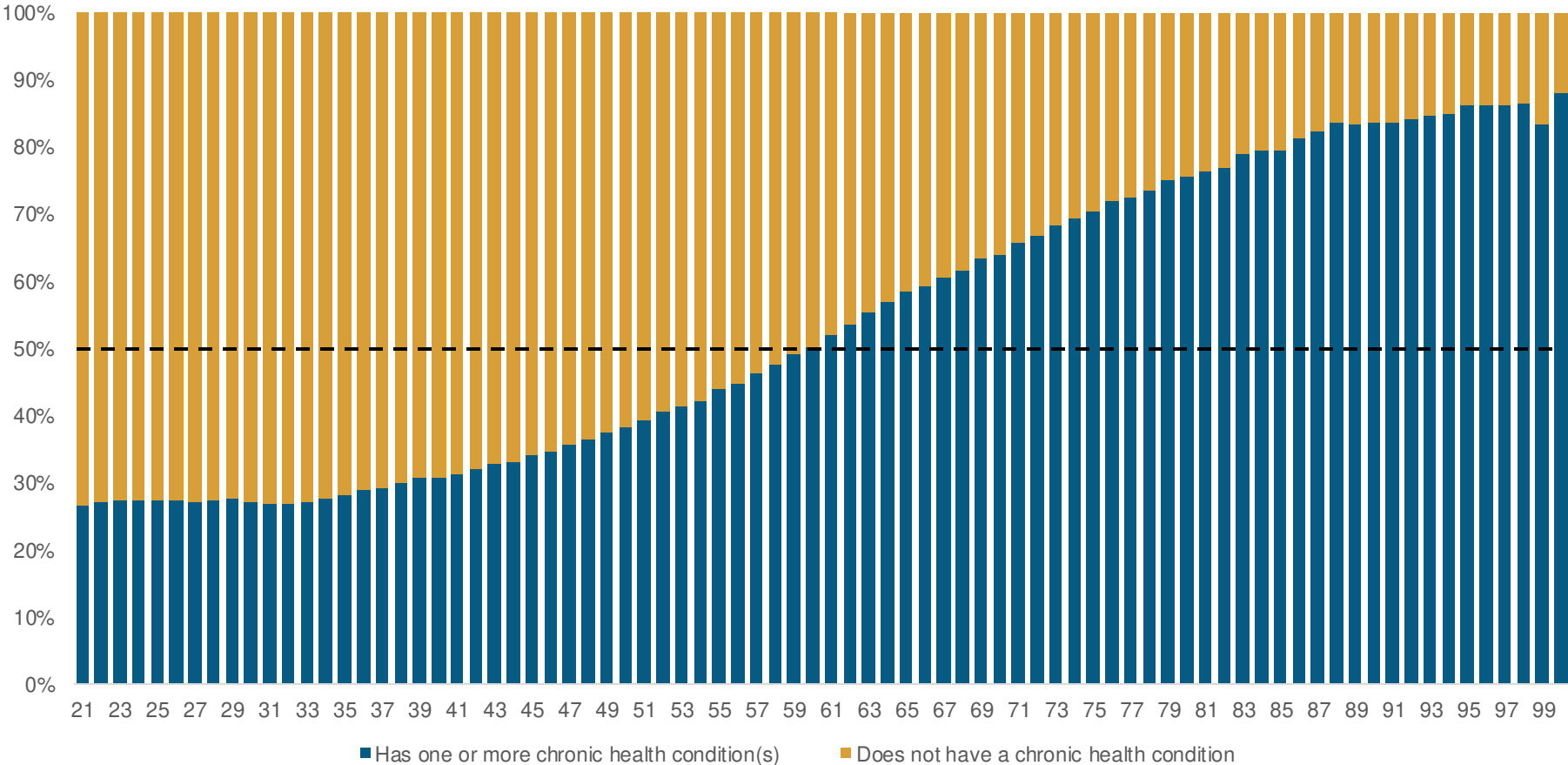
More women working: Not enough time to foster a child



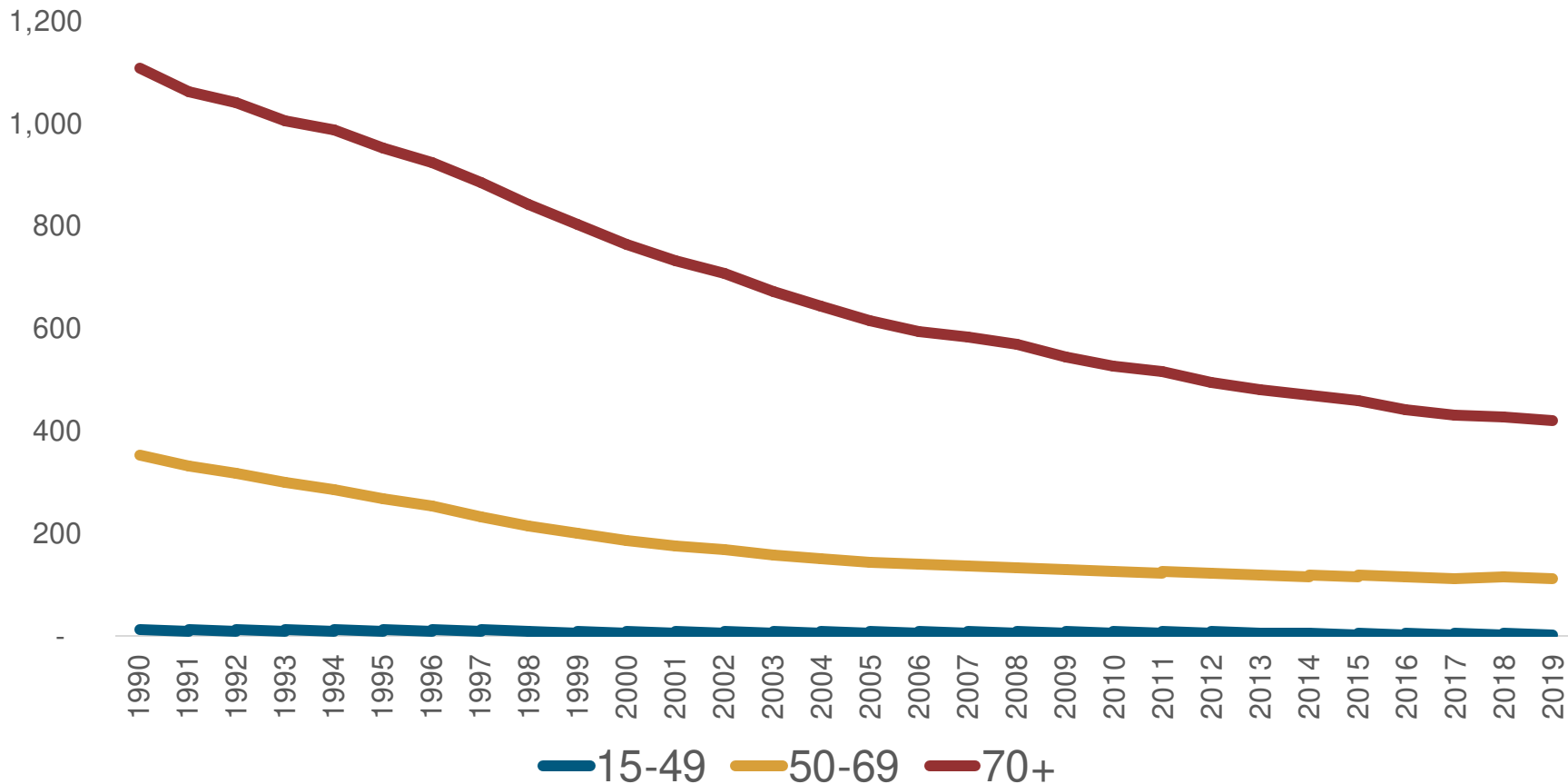
Poor health might limit number of older foster carers



As people age chronic health conditions increase

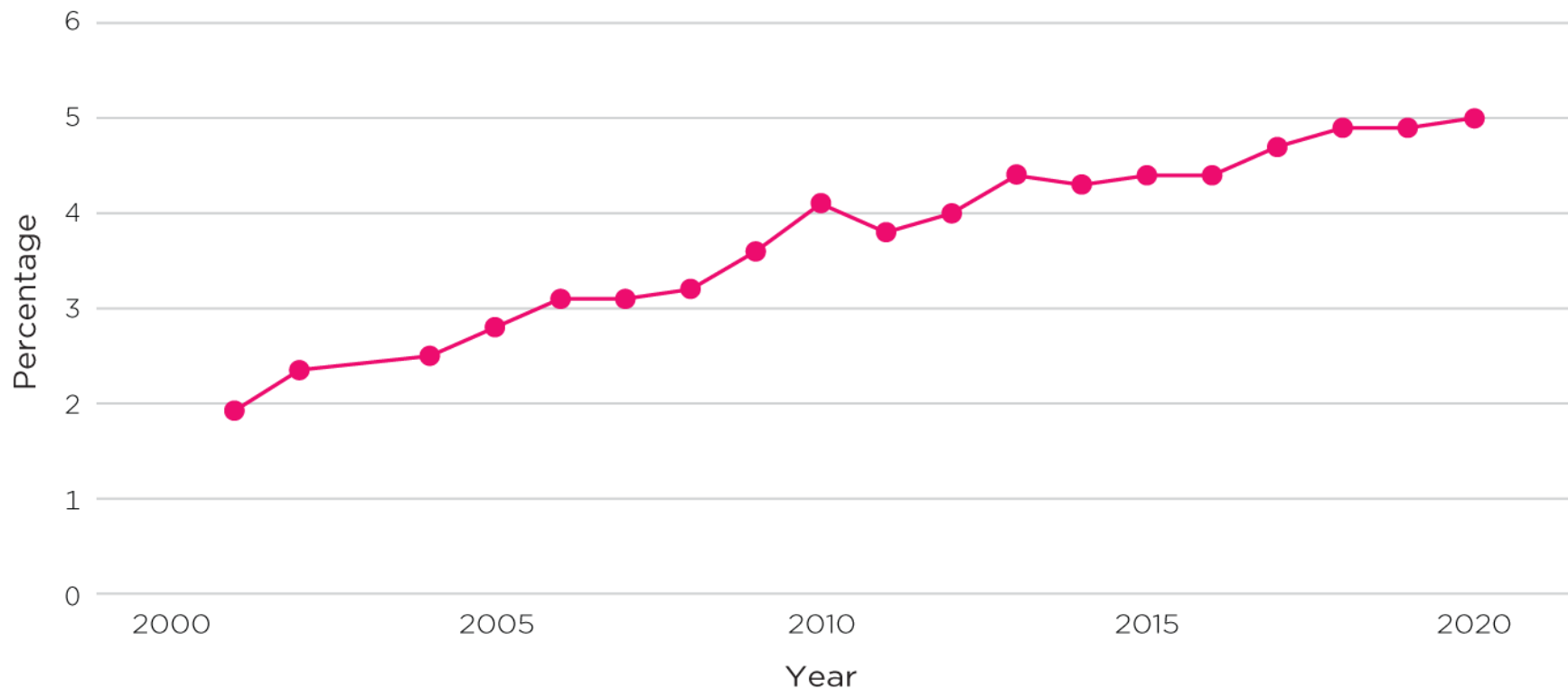


Deaths from smoking mirror lower smoking rates



Fertility treatments rise in popularity

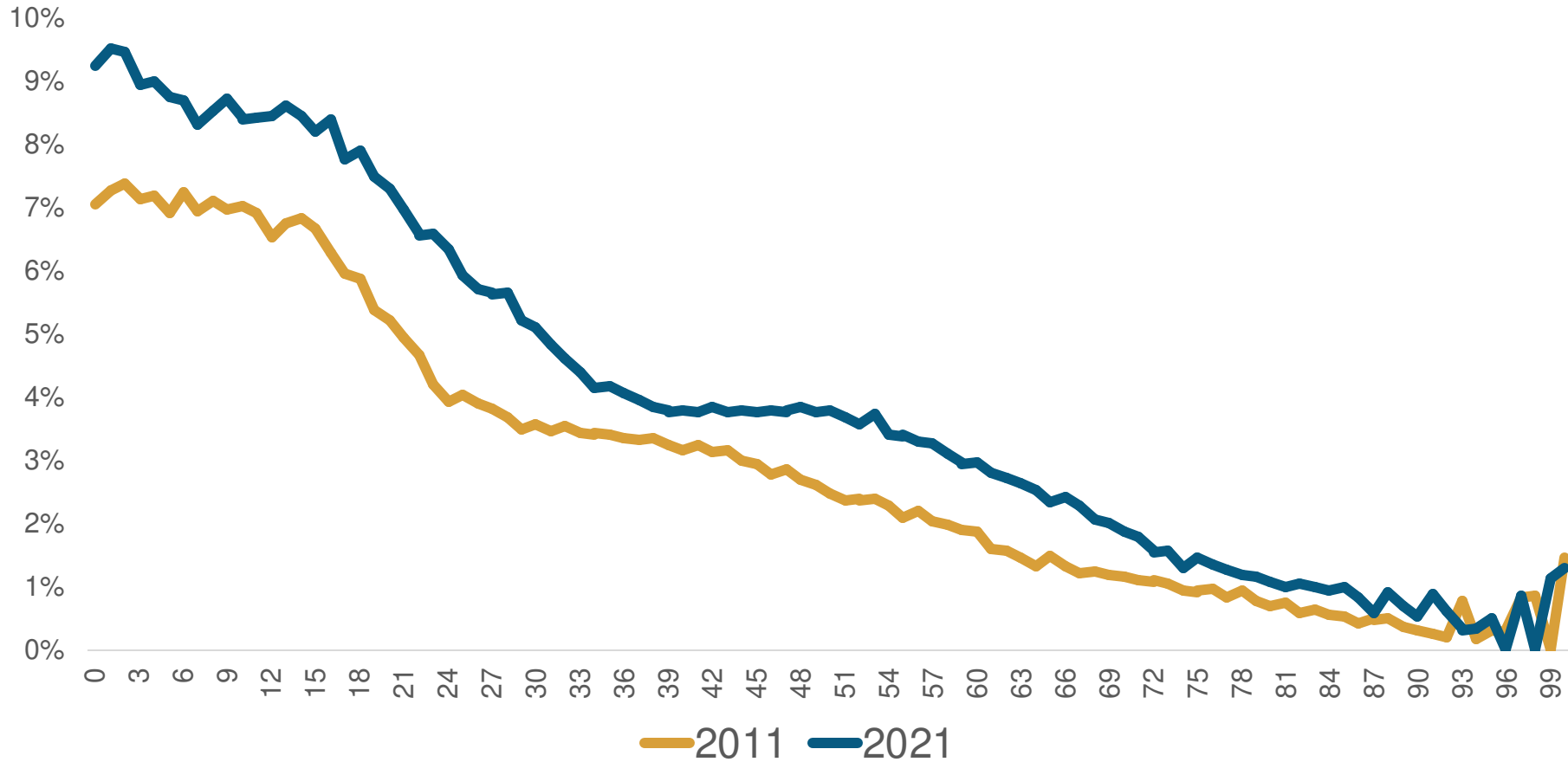
Figure 13: Women giving birth through ART as a percentage of all women giving birth, Australia, 2001–20



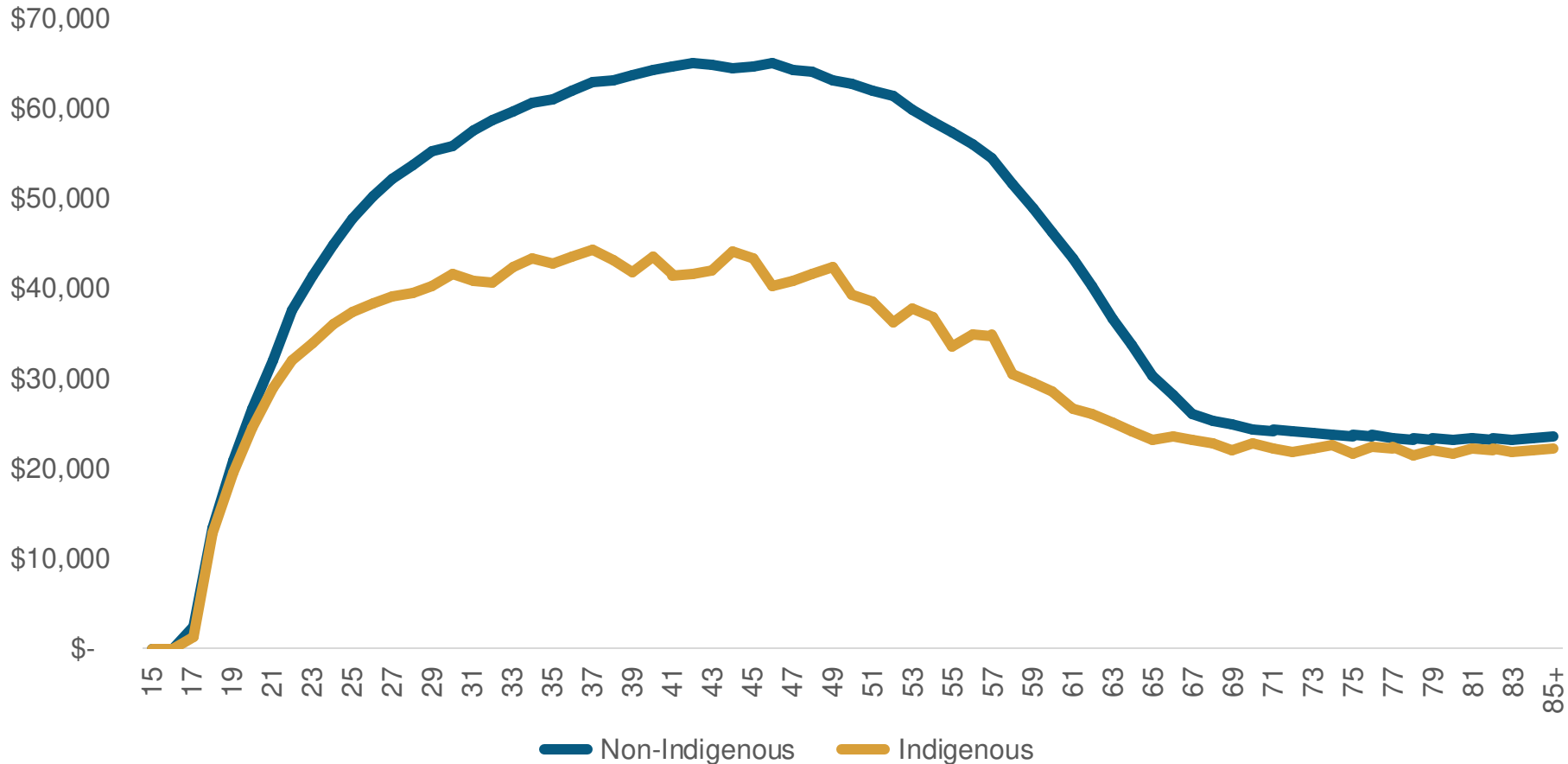
Source: Births in Australia (AIFS, April 2023)

Indigenous Data

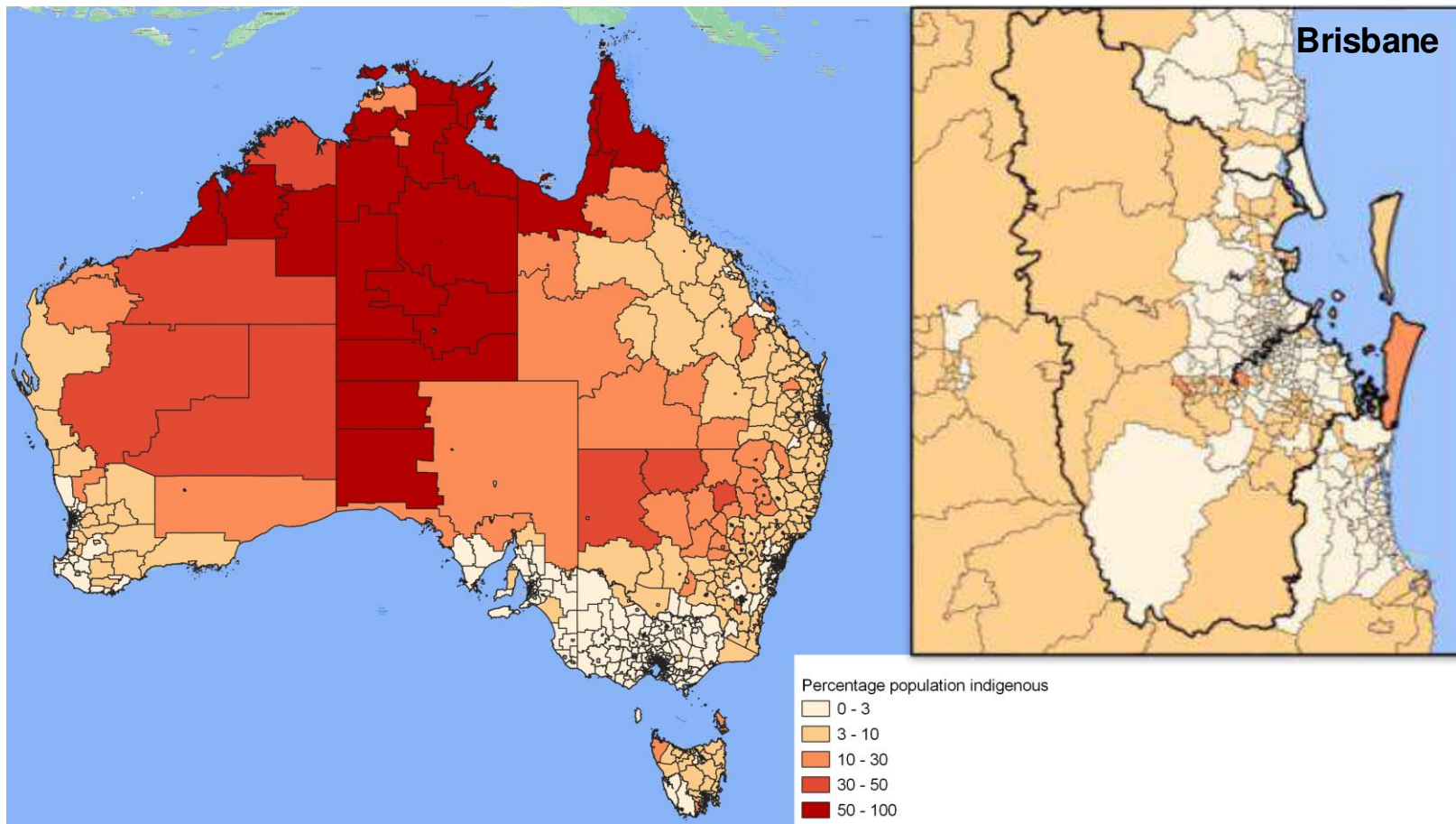
Australia became more accepting of minorities



Pay gap: Indigenous people in Qld earn much less

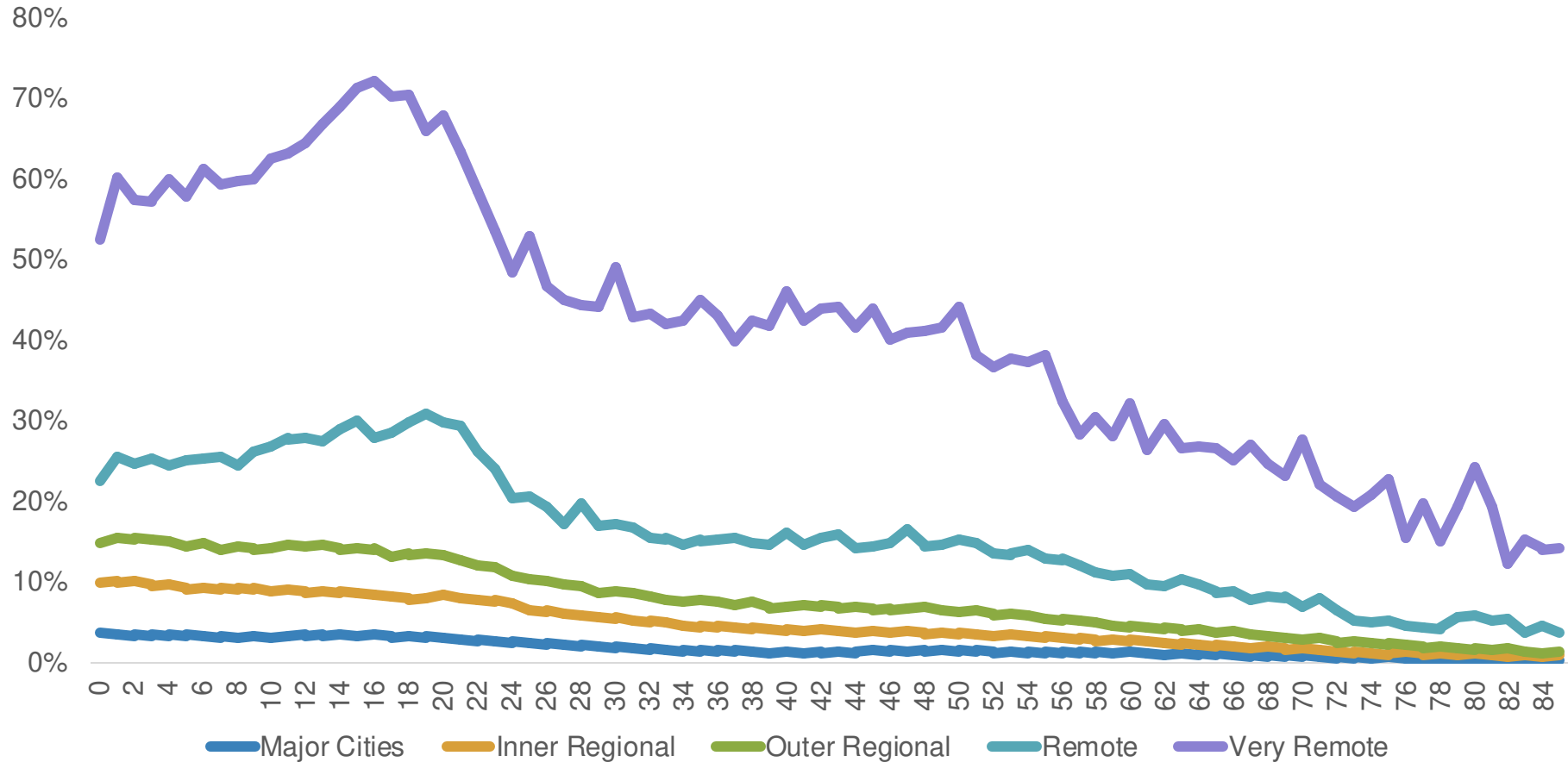


Indigenous population clusters in remote Queensland



Share of the population by SA2 that self-identifies as Indigenous; ABS Census 2021

Remote areas house (relatively) more Indigenous people

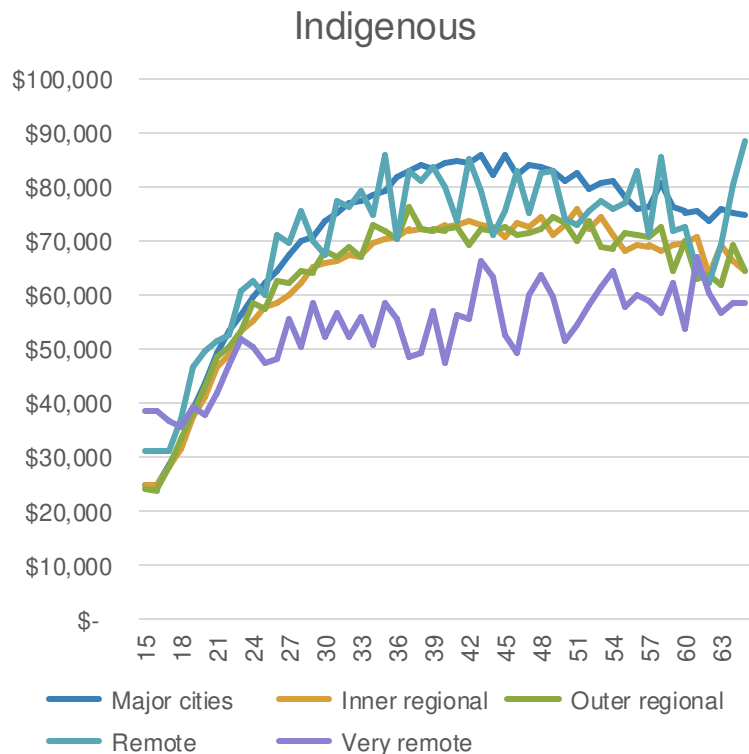


Urban non-indigenous and remote indigenous clusters

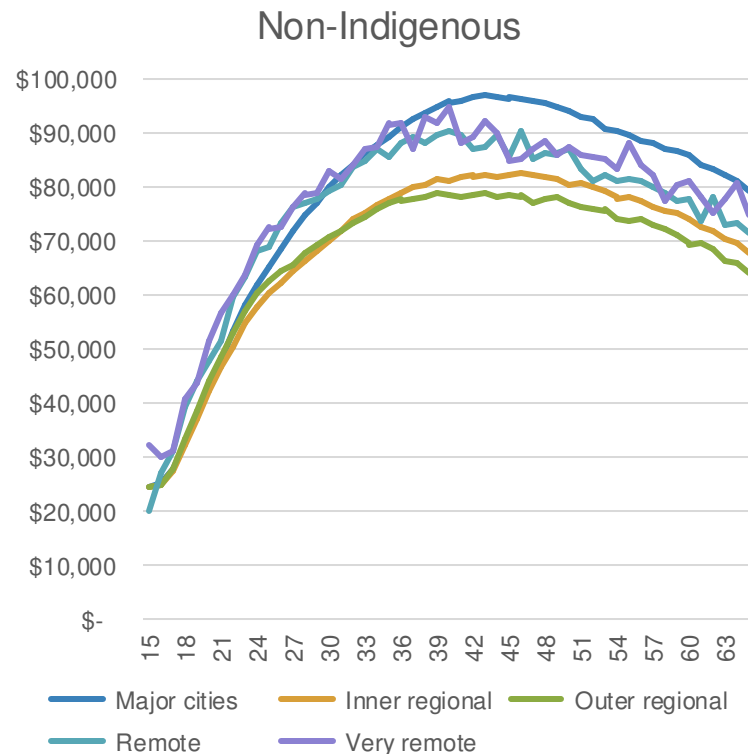
State	Major Cities	Inner Regional	Outer Regional	Remote	Very Remote
New South Wales	2%	7%	10%	19%	37%
	98%	93%	90%	81%	63%
Victoria	1%	2%	3%	1%	0%
	99%	98%	97%	99%	100%
Queensland	3%	6%	9%	19%	42%
	97%	94%	91%	81%	58%
Western Australia	2%	3%	6%	13%	35%
	98%	97%	94%	87%	65%
South Australia	2%	2%	5%	4%	31%
	98%	98%	95%	96%	69%
Tasmania	0%	4%	6%	6%	5%
	100%	96%	94%	94%	95%
Australian Capital Territory	2%	0%	0%	0%	0%
	98%	100%	100%	100%	100%
Northern Territory	0%	0%	11%	34%	78%
	100%	100%	89%	66%	22%
Total	2%	5%	8%	17%	46%
	98%	95%	92%	83%	54%

Note: all of ACT is classified as a Major City

Very remote indigenous workers record lowest income



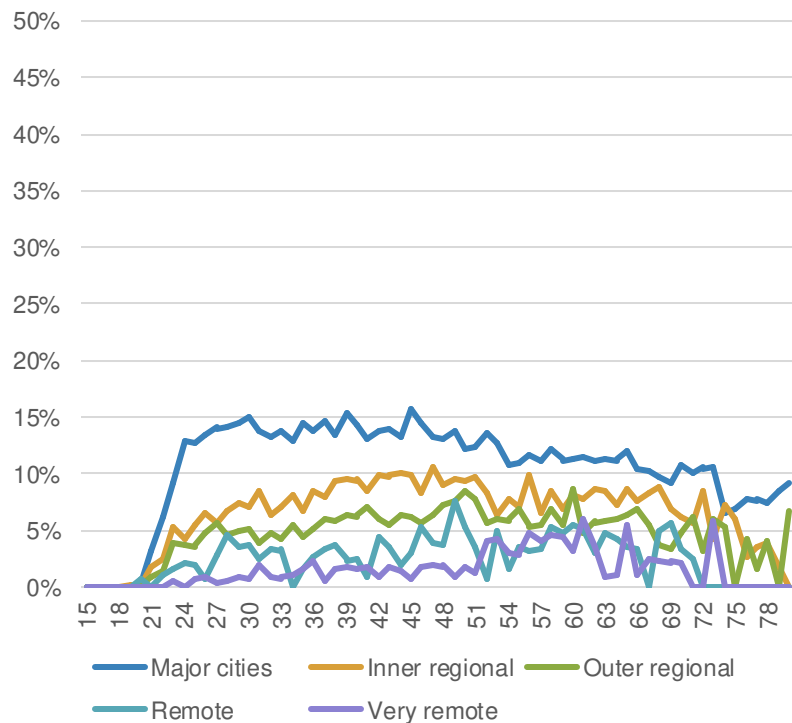
Regional income gap (Major cities vs Very remote) for the Indigenous workforce is **34 per cent**.



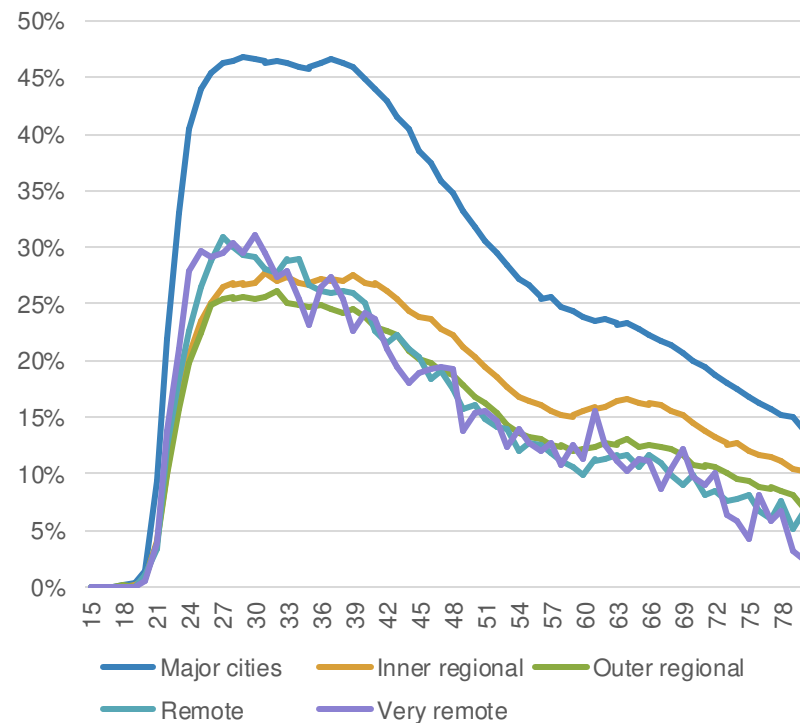
Regional income gap (Major cities vs Very remote) for the Non-indigenous workforce is **only 4 per cent**.

Dramatic indigenous education gap drives income gap

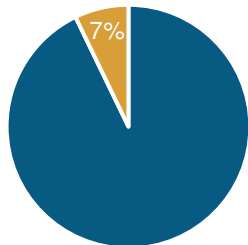
Indigenous population



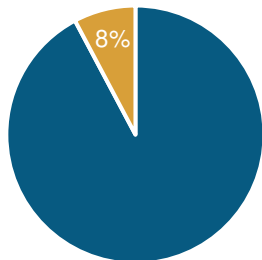
Non-indigenous population



Australia added more welfare support workers



Australia recorded **50,206 welfare support workers** in 2011 of whom 7 per cent were indigenous.



By 2021 Australia recorded **71,316 welfare support workers** of who 8 per cent were indigenous. This means the nation grew this occupation by 42 per cent in just a decade and managed to add indigenous workers at a faster rate.

Indigenous children in foster care are overrepresented 4.5x

State	Indigenous children aged 0-17; as share of all children		Indigenous foster children aged 0-17; as share of all foster children	
Northern Territory	20,533	38%	355	89%
Tasmania	11,330	11%	149	27%
Queensland	95,054	9%	2,078	44%
New South Wales	109,711	7%	2,559	41%
Western Australia	33,797	6%	1,102	51%
South Australia	16,352	5%	553	31%
Australian Capital Territory	3,182	3%	59	26%
Victoria	24,619	2%	595	24%
Australia	314,607	6%	7,450	40%

The Census records some 18,500 children that are listed as “Foster Child”. This is a significant undercount but still an interesting benchmark.

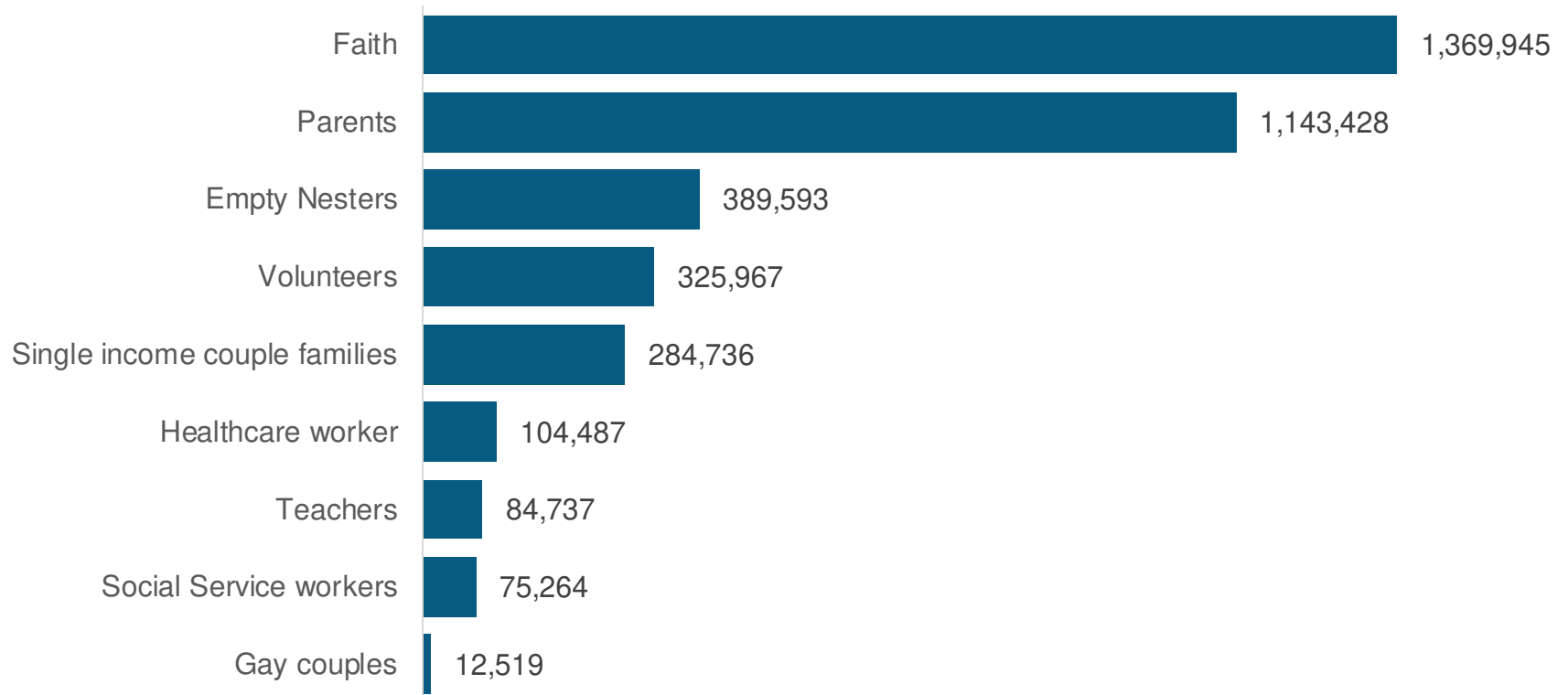
Overview: Personas

Personas cluster in different broad geographies

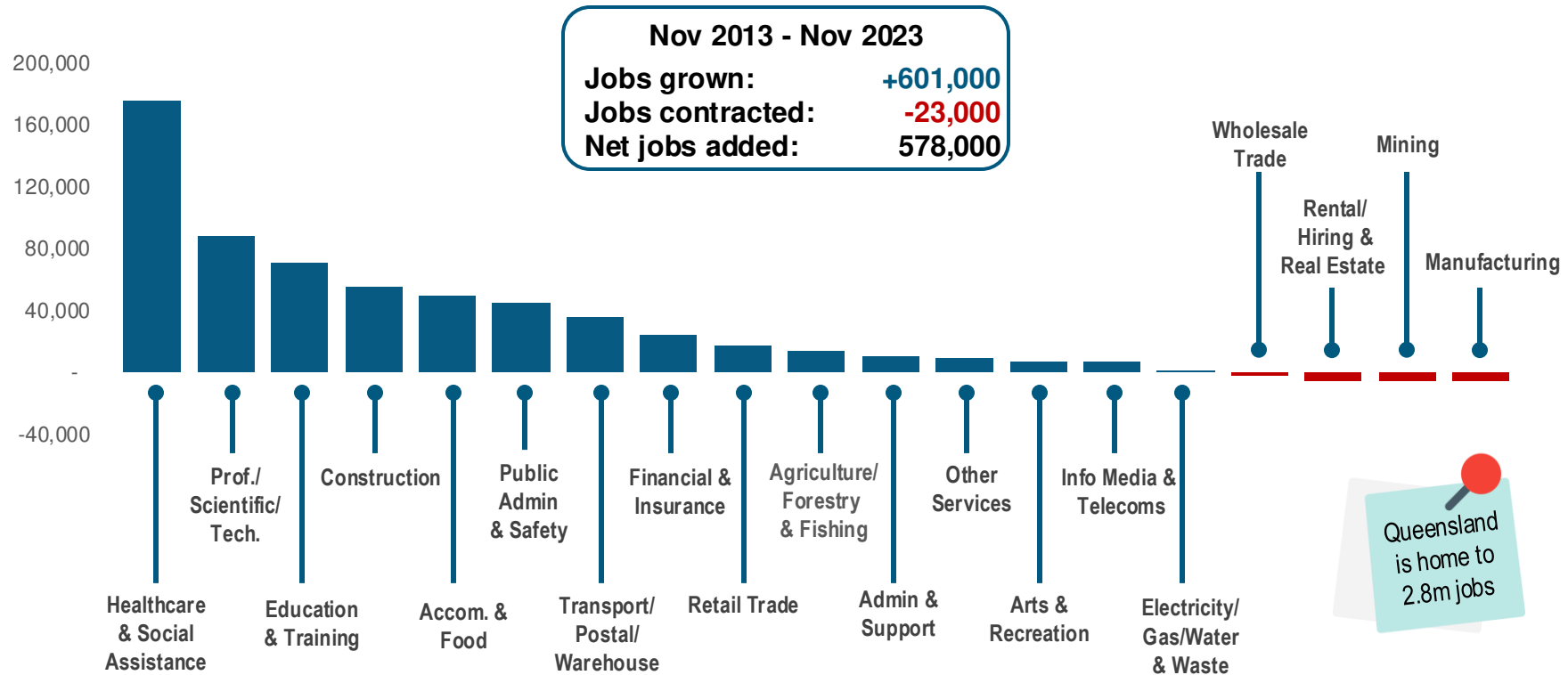
Remoteness region	Population	Healthcare workers	Social service workers	Teachers	Single income couple families
Major Cities	67%	73%	67%	69%	72%
Inner Regional	18%	14%	19%	17%	16%
Outer Regional	13%	11%	13%	13%	11%
Remote	1%	1%	1%	1%	1%
Very Remote	1%	1%	1%	1%	1%
Total	5,140,805	104,487	75,264	84,737	284,736

Remoteness region	Gay couples	Empty Nesters	Parents	Faith	Volunteers
Major Cities	78%	60%	71%	66%	66%
Inner Regional	11%	25%	16%	19%	18%
Outer Regional	10%	14%	12%	13%	14%
Remote	1%	1%	1%	1%	1%
Very Remote	0%	1%	1%	1%	1%
Total	12,519	389,593	1,143,428	1,369,945	325,967

The 9 personas differ in size significantly



Jobs continue to increase but are driven by particular industries



Healthcare workers

1. Healthcare workers

Distance from CBD	Healthcare workers		Total Queensland pop	
Major Cities	76,578	77%	1,204,547	70%
Inner Regional	14,615	15%	268,986	16%
Outer Regional	11,995	7%	219,308	13%
Remote	692	1%	16,819	1%
Very Remote	607	1%	14,175	1%
Total	104,487	100%	1,723,835	100%

Rank	Highest no. of persona	Count	Rank	Highest share of persona	Share
1.	Newstead - Bowen Hills	933	1.	Douglas	17%
2.	Coorparoo	734	2.	Wurtulla - Birtinya	14%
3.	The Hills District	725	3.	The Range - Allenstown	13%
4.	Springfield Lakes	694	4.	Whitfield - Edge Hill	13%
5.	Kedron - Gordon Park	638	5.	Freshwater - Stratford	13%
6.	Burdell - Mount Low	595	6.	Middle Ridge	13%
7.	Murrumba Downs - Griffin	590	7.	Toowoomba - East	12%
8.	Southport - North	586	8.	Townsville City - North Ward	12%
9.	South Brisbane	575	9.	Windsor	11%
10.	Annerley	567	10.	Grange	11%

Data sourced from ABS Census 2021 based on SA2 boundaries

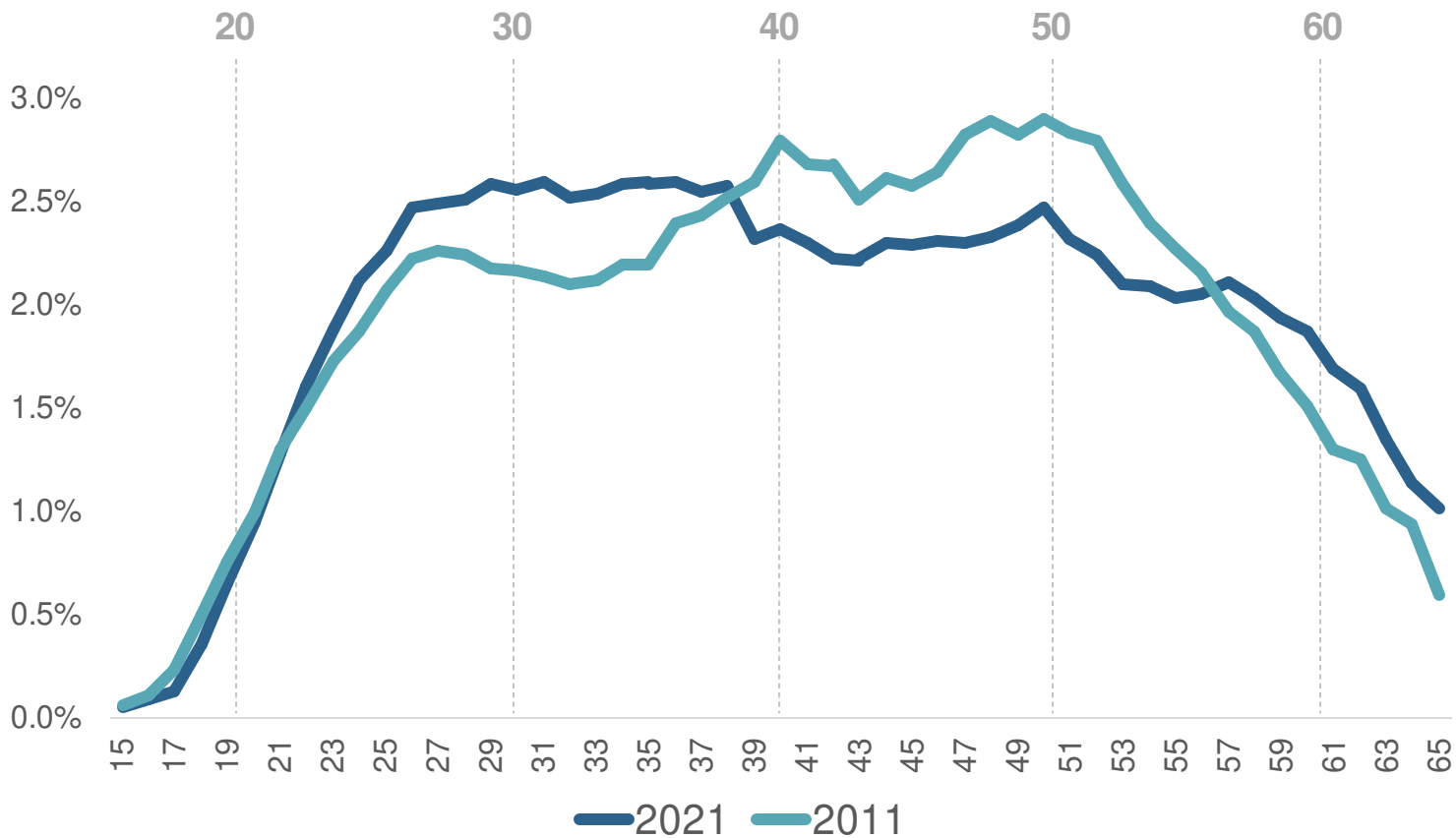


Healthcare workers

Workers between aged 25-49, employed in the Hospital, Medical & Other Health Care Services industries (2d level)

Healthcare workers closely mirror the general population distribution but cluster around centrally located medical facilities. This group will see strong growth in the coming decade

Queensland rejuvenated its healthcare workforce



Social Service Workers

2. Social Service workers

Distance from CBD	Social Service workers		Total Queensland pop	
Major Cities	50,183	67%	1,806,637	68%
Inner Regional	14,638	19%	461,826	17%
Outer Regional	9,577	13%	352,596	13%
Remote	476	1%	26,013	1%
Very Remote	390	1%	22,382	1%
Total	75,264	100%	2,669,454	100%

Rank	Highest no. of persona	Count	Rank	Highest share of persona	Share
1.	Redbank Plains	567	1.	Northern Peninsula	9%
2.	Murrumba Downs - Griffin	486	2.	Palm Island	6%
3.	Nambour	479	3.	Svensson Heights - Norville	5%
4.	Kallangur	465	4.	Darling Heights	5%
5.	Springfield Lakes	465	5.	Point Vernon	5%
6.	North Lakes	451	6.	Yorkeys Knob - Machans Beach	5%
7.	Caboolture - South	425	7.	Drayton - Harristown	5%
8.	Burdell - Mount Low	394	8.	Pialba - Eli Waters	5%
9.	Deception Bay	392	9.	Newtown (Qld)	5%
10.	Forest Lake - Ellen Grove	391	10.	Redbank Plains	5%

Data sourced from ABS Census 2021 based on SA2 boundaries

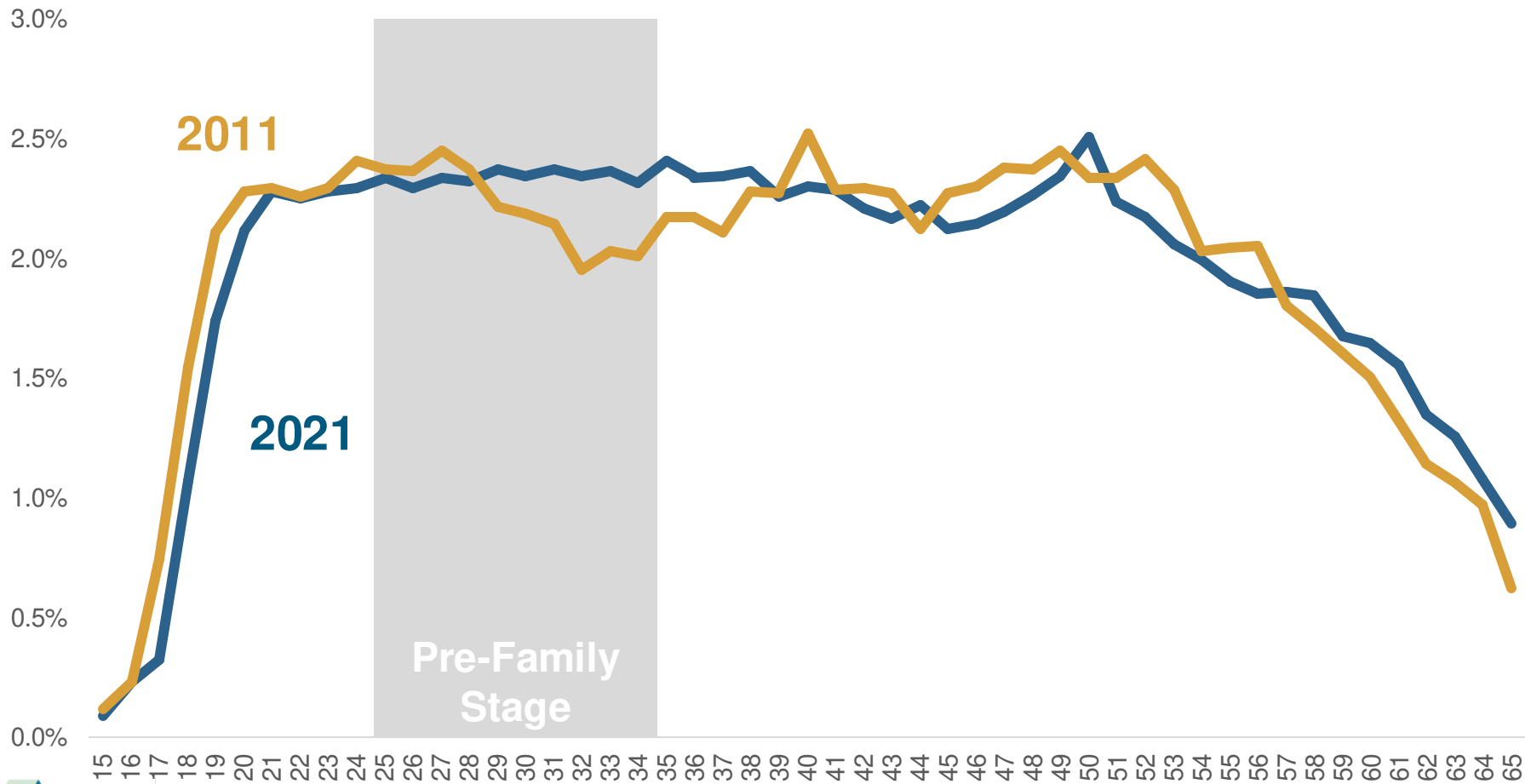


INSIGHTS

Social services workers are identified from the census data as persons employed in Social Assistance Services industry (2-digit level) between the ages of 25 and 64

Their geographic distribution is directly linked to the geographic distribution of the population.

Are social service workers getting too young to foster?



Teachers

3. Teachers

Distance from CBD	Teachers		Total Queensland pop	
Major Cities	58,404	69%	1,424,538	69%
Inner Regional	14,275	17%	330,457	16%
Outer Regional	10,702	13%	264,719	13%
Remote	705	1%	20,001	1%
Very Remote	651	1%	16,959	1%
Total	84,737	100%	2,056,674	100%

Rank	Highest no. of persona	Count	Rank	Highest share of persona	Share
1.	The Hills District	666	1.	Middle Ridge	7%
2.	Coorparoo	468	2.	Rangeville	7%
3.	Yeppoon	465	3.	Charters Towers	6%
4.	The Gap	462	4.	Toowoomba - East	6%
5.	Mudgeeraba - Bonogin	448	5.	Taringa	6%
6.	Mount Gravatt	442	6.	St Lucia	6%
7.	Buderim - South	430	7.	Kenmore	6%
8.	North Lakes	429	8.	Bellbowrie - Moggill	6%
9.	Springfield Lakes	417	9.	Highfields	6%
10.	Redlynch	417	10.	Redlynch	6%

Data sourced from ABS Census 2021 based on SA2 boundaries

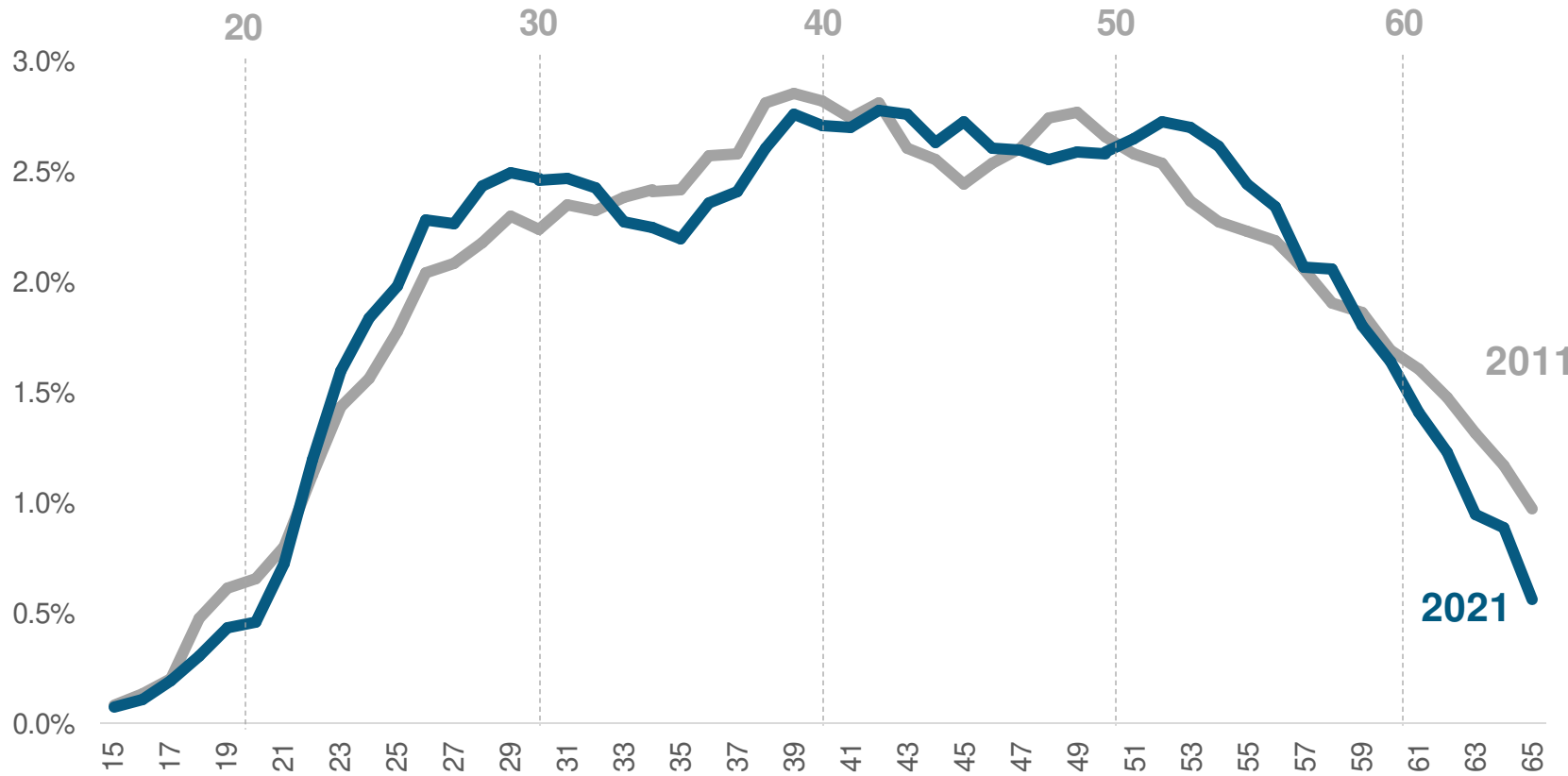


INSIGHTS

Teachers are identified from the census data as Education Professionals (2-digit occupation level) between the ages of 25 and 59

Teachers' geographic distribution is directly linked to the geographic distribution of the population.

Education professionals in their 50s are worth targeting



Same-sex Couples

4. Same-sex Couples

Distance from CBD	Same-sex couples		Total Queensland pop	
Major Cities	9,808	68%	1,132,501	78%
Inner Regional	1,399	17%	290,462	11%
Outer Regional	1,216	13%	220,867	10%
Remote	63	1%	15,702	1%
Very Remote	33	1%	13,433	0%
Total	12,519	100%	1,672,965	100%

Rank	Highest no. of persona	Count	Rank	Highest share of persona	Share
1.	Newstead - Bowen Hills	227	1.	Sandgate - Shorncliffe	4%
2.	New Farm	160	2.	New Farm	4%
3.	Morningside - Seven Hills	108	3.	Caloundra Hinterland	4%
4.	West End	104	4.	Scarborough - Newport	3%
5.	Fortitude Valley	102	5.	Golden Beach - Pelican Waters	3%
6.	Coorparoo	99	6.	Karana Downs	3%
7.	The Hills District	92	7.	Eagle Farm - Pinkenba	3%
8.	Nundah	92	8.	Northgate - Virginia	3%
9.	Trinity Beach - Smithfield	91	9.	Grange	3%
10.	Brisbane City	91	10.	Bulimba	3%

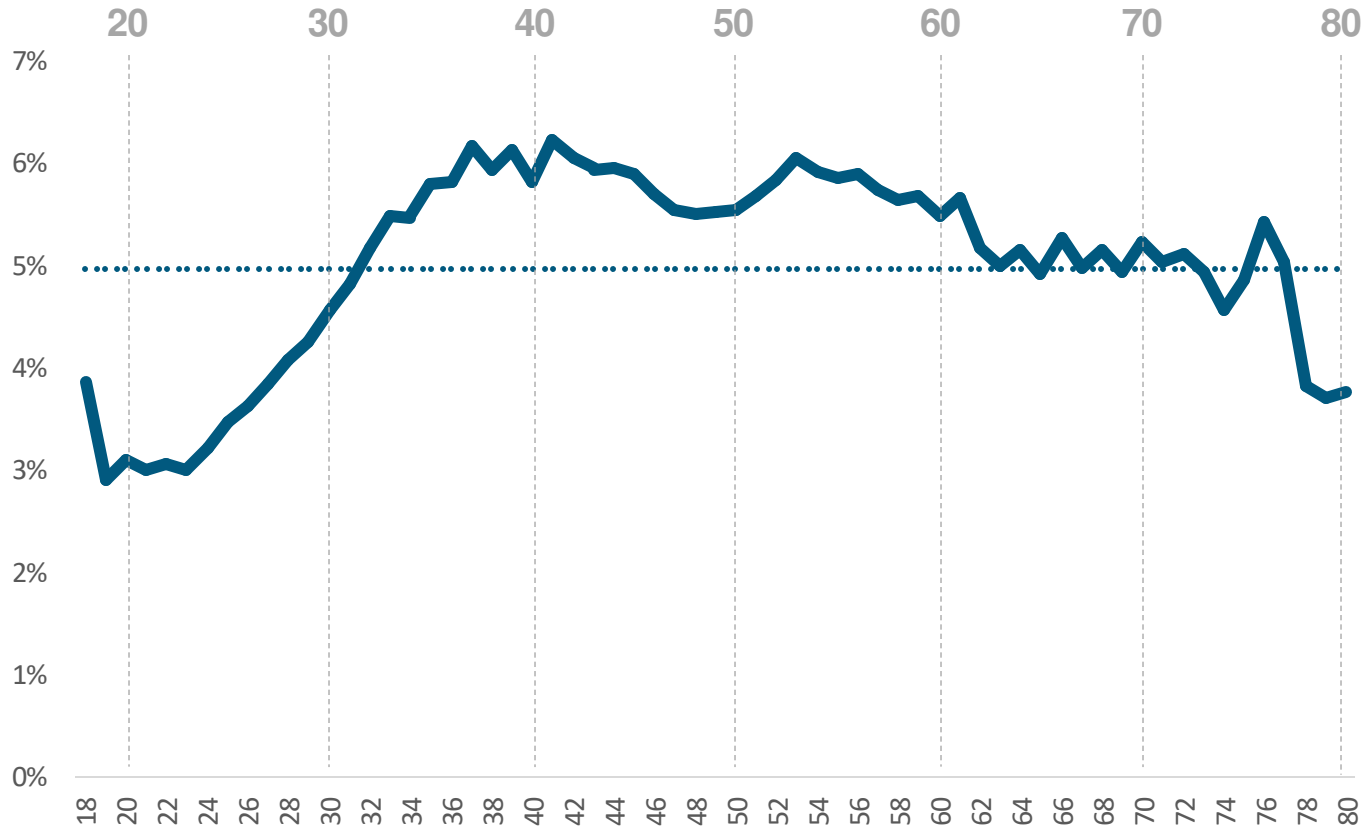


INSIGHTS

Persons identifying as husband/wife/de facto partner in a relationship between the age of 25 and 39.

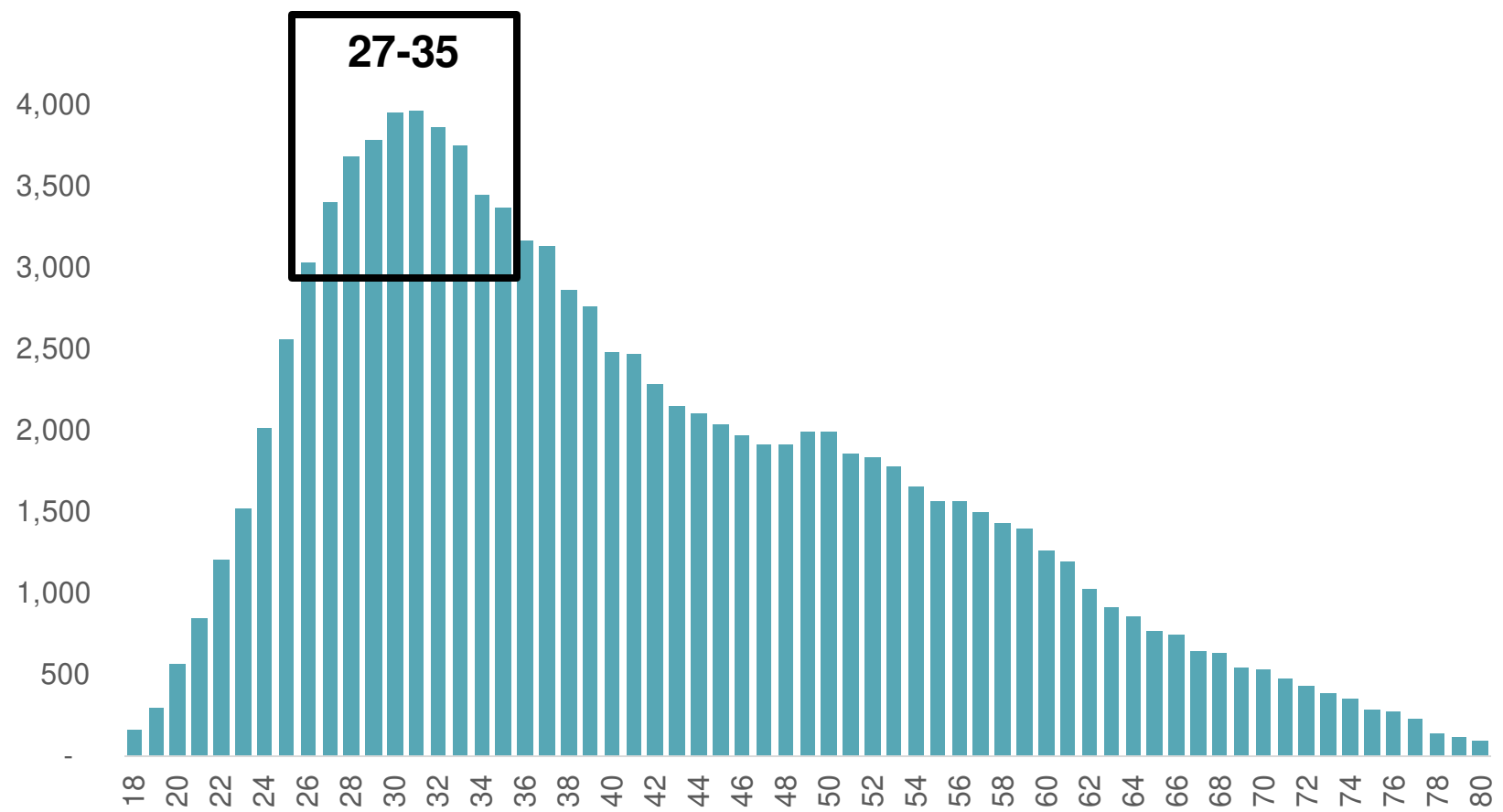
Same-sex attracted people tend to cluster in inner suburbs of our biggest cities to increase the size of the relevant dating pool.

At least six per cent of Australians are same-sex attracted



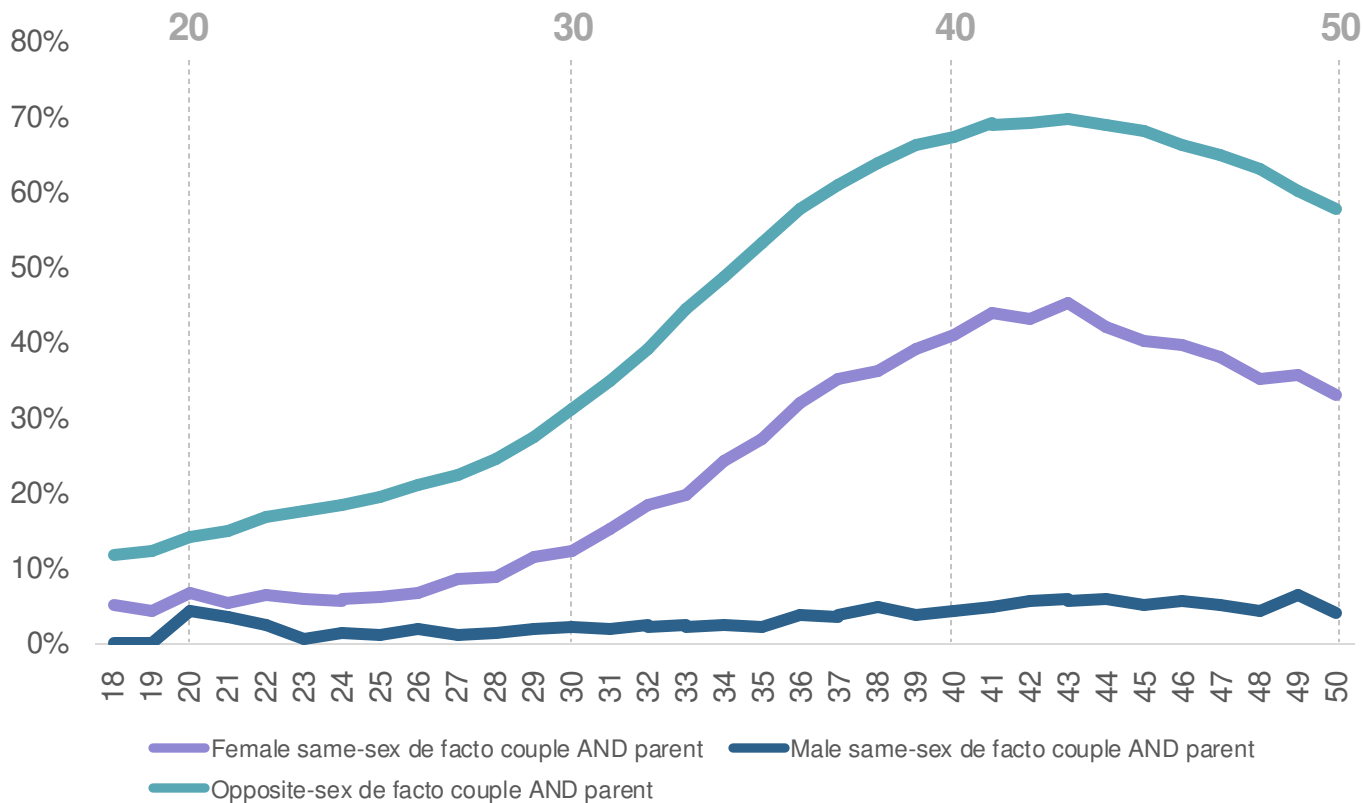
Same-sex couples as share of all de facto couples by age; Source: ABS Census 2021

Recruiting same-sex couples? Millennials for the win!

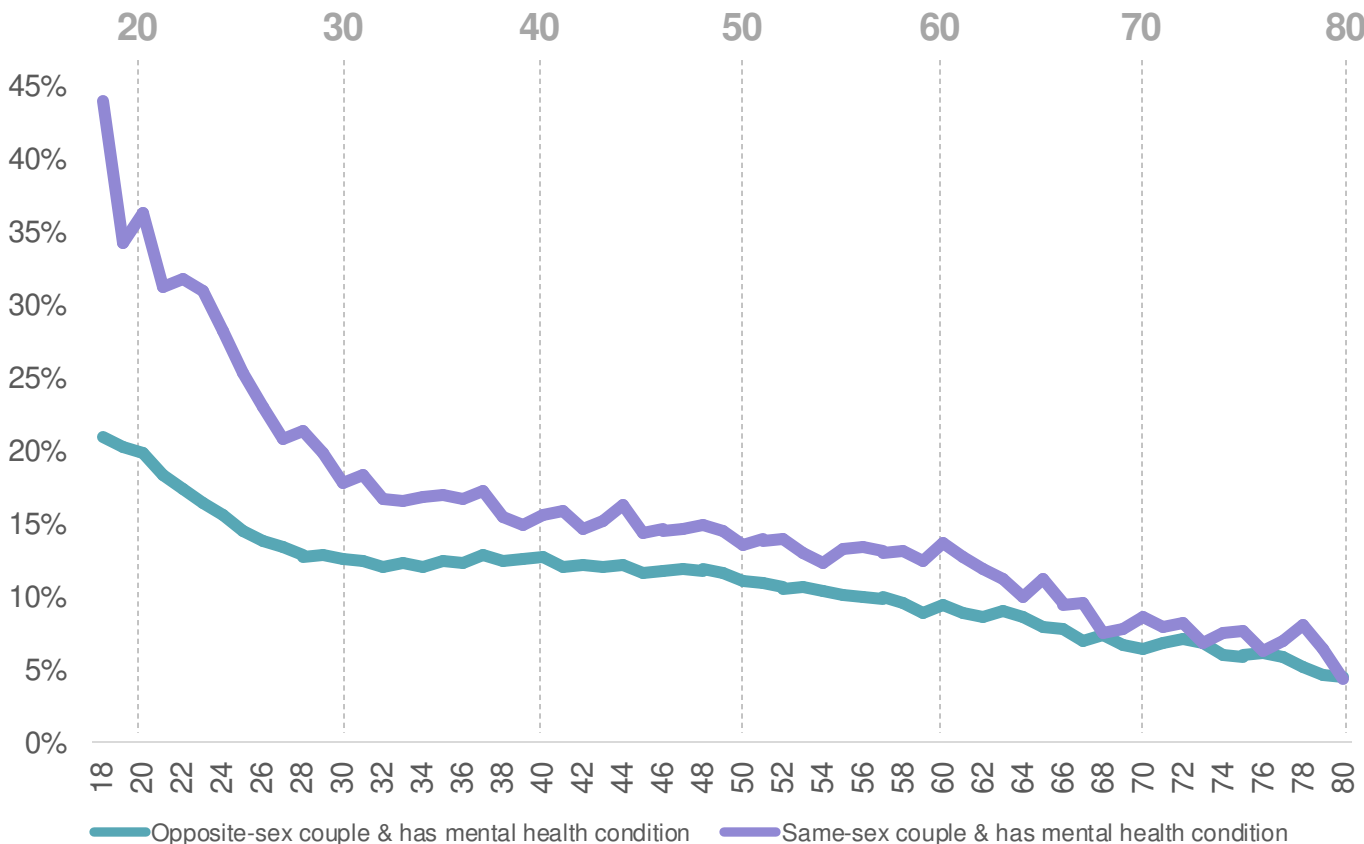


Number of people in same-sex de facto relationship by age; ABS Census 2021

Recruiting same-sex couples? Bet on women!



Young same-sex couples display poor mental health



Empty Nesters

5. Empty Nesters

Distance from CBD	Empty nesters		Total Queensland pop	
Major Cities	232,057	60%	541,924	62%
Inner Regional	95,607	25%	193,761	22%
Outer Regional	55,888	14%	124,858	14%
Remote	3,198	1%	8,152	1%
Very Remote	2,843	1%	7,376	1%
Total	389,593	100%	876,071	100%

Rank	Highest no. of persona	Count	Rank	Highest share of persona	Share
1.	Bribie Island	3578	1.	Craignish - Dundowran Beach	61%
2.	Noosa Hinterland	3106	2.	Highfields	61%
3.	Gympie Surrounds	2734	3.	Golden Beach - Pelican Waters	59%
4.	Bargara - Burnett Heads	2602	4.	Bribie Island	58%
5.	Maroochydore - Kuluin	2247	5.	Cambooya - Wyreema	58%
6.	Beachmere - Sandstone Point	2191	6.	Booral - River Heads	58%
7.	Yeppoon	2051	7.	Hope Island	57%
8.	Lockyer Valley - East	2035	8.	Gowrie (Qld)	57%
9.	Golden Beach - Pelican Waters	1955	9.	Burrum - Fraser	57%
10.	Hope Island	1950	10.	Boonah	56%

Data sourced from ABS Census 2021 based on SA2 boundaries

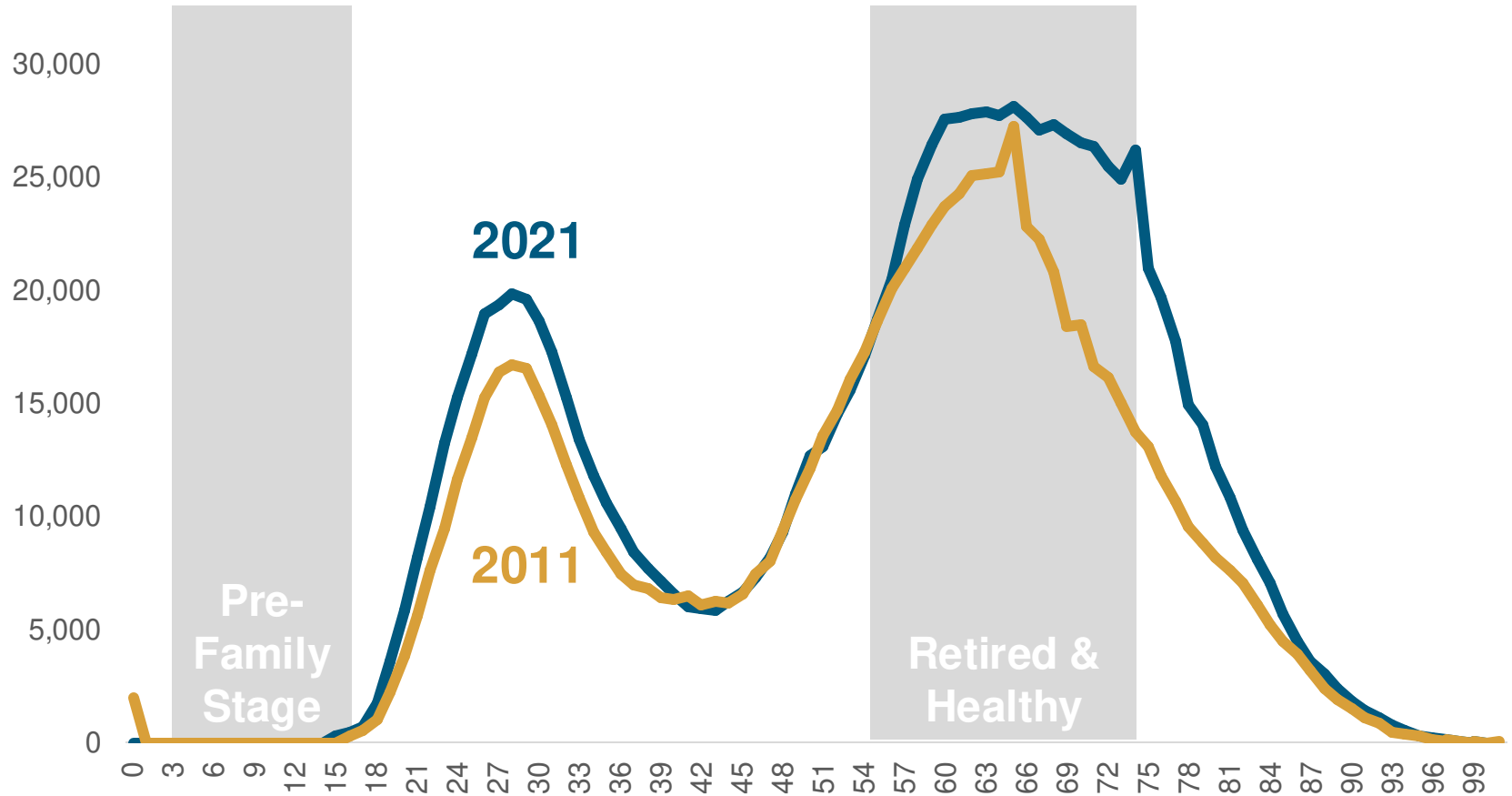


INSIGHTS

Persons who live in couple families with no children and are between the ages of 55 and 69.

Sea-changers and tree-changers: Empty nesters frequently choose to move to lifestyle destinations in inner regional Australia.

Retired empty nesters are a sizeable cohort to tap into



Queenslanders living in couple families with no children in 2011 and 2021; ABS Census

Parents

6. Parents

Distance from CBD	Parents		Total Queensland pop	
Major Cities	808,271	71%	1,624,106	68%
Inner Regional	184,222	16%	395,228	17%
Outer Regional	133,389	12%	309,634	13%
Remote	9,521	1%	23,152	1%
Very Remote	8,025	1%	19,817	1%
Total	1,143,428	100%	2,371,937	100%

Rank	Highest no. of persona	Count	Rank	Highest share of persona	Share
1.	Springfield Lakes	7763	1.	Fig Tree Pocket	74%
2.	North Lakes	7045	2.	Wakerley	73%
3.	The Hills District	6844	3.	Kenmore	69%
4.	Murrumba Downs - Griffin	6720	4.	Chapel Hill	69%
5.	Calamvale - Stretton	6626	5.	Brookfield - Kenmore Hills	68%
6.	Narangba	6373	6.	Augustine Heights - Brookwater	68%
7.	Forest Lake - Ellen Grove	6161	7.	Eatons Hill	68%
8.	Cashmere	6113	8.	Bellbowrie - Moggill	68%
9.	Redbank Plains	6020	9.	The Gap	68%
10.	Upper Coomera - North	5818	10.	Pinjarra Hills - Pullenvale	67%

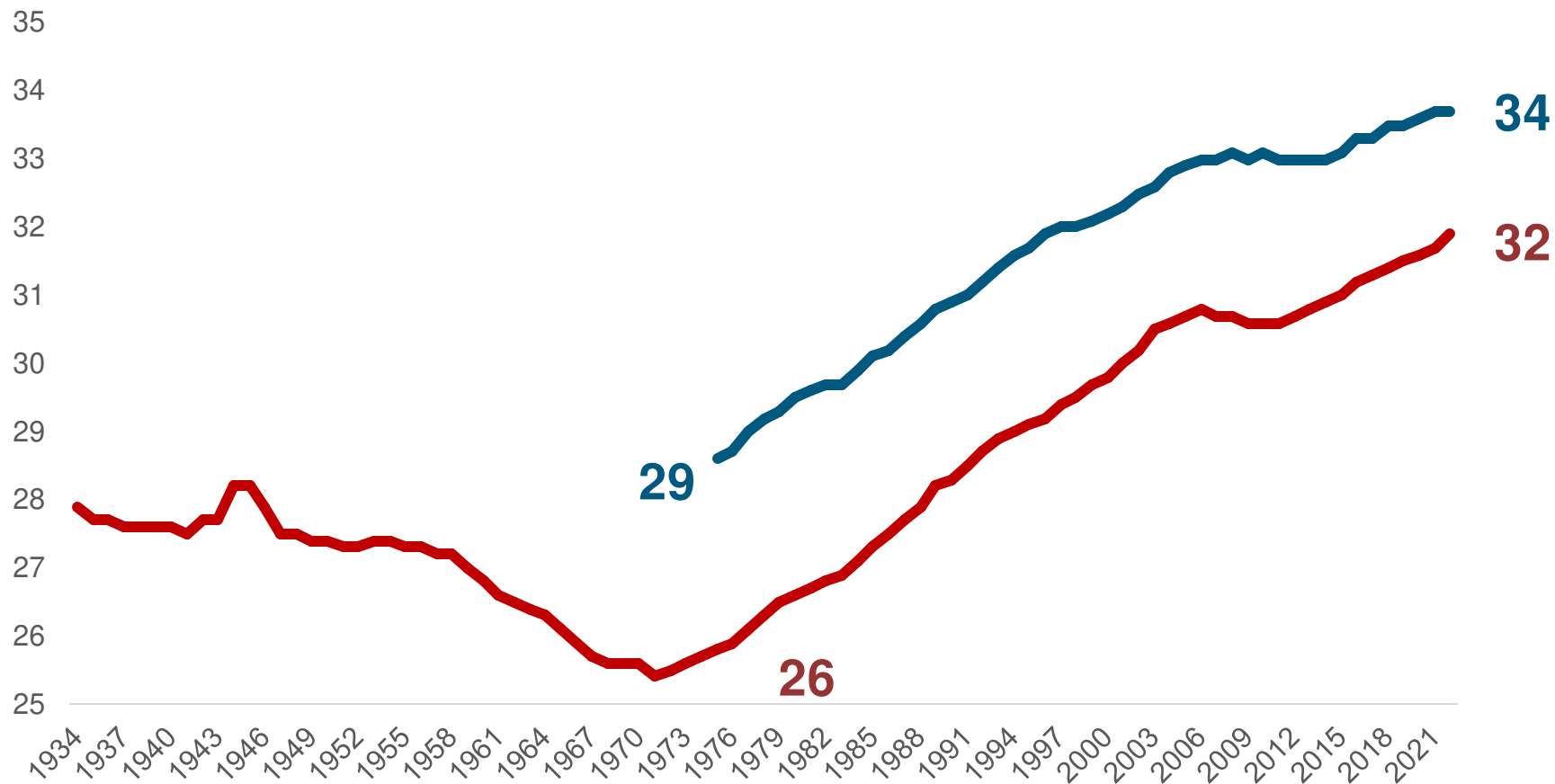


INSIGHTS

Persons identified as parents in Parent Indicator variable between the age of 25 and 59.

Parents are somewhat clustered in the major cities because this is where the majority of jobs are located.

Older parents shorten the foster care window



Faith

7. Faith

Distance from CBD	Persons with religious belief		Total Queensland pop	
Major Cities	901,401	66%	1,724,077	67%
Inner Regional	261,923	19%	472,066	18%
Outer Regional	180,026	13%	344,936	13%
Remote	13,644	1%	24,378	1%
Very Remote	12,951	1%	21,041	1%
Total	1,369,945	100%	2,586,498	100%

Rank	Highest no. of persona	Count	Rank	Highest share of persona	Share
1.	Forest Lake - Ellen Grove	7056	1.	Yarrabah	84%
2.	Calamvale - Stretton	6902	2.	Palm Island	78%
3.	Springfield Lakes	6861	3.	Torres Strait Islands	78%
4.	The Hills District	6460	4.	Kowanyama - Pormpuraaw	75%
5.	North Lakes	6386	5.	Middle Ridge	72%
6.	Murrumba Downs - Griffin	6372	6.	Pallara - Willawong	72%
7.	Inala - Richlands	6030	7.	Ayr	71%
8.	Cashmere	6011	8.	Eungella Hinterland	70%
9.	Lockyer Valley - East	5793	9.	Kuraby	70%
10.	Redbank Plains	5666	10.	Pittsworth	70%



INSIGHTS

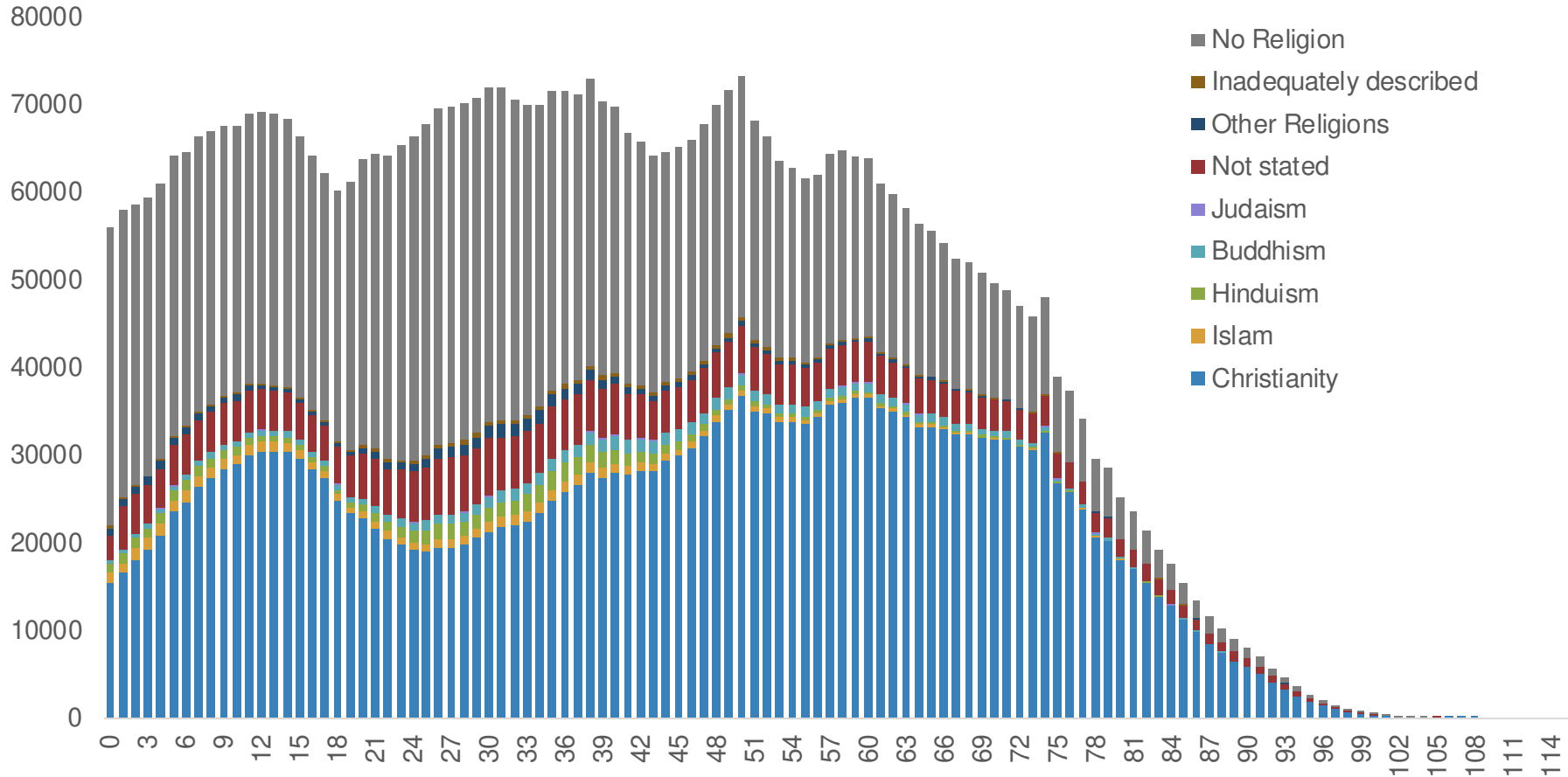
Persons with a religious belief between the ages of 30-69.

Believers' geographic distribution mirrors the geographic distribution of the population.

The faithful are a shrinking cohort and increasingly diverse

	2011	2021	2011	2021	Change
Christianity	66%	44%	2,785,058	2,357,393	-15%
Islam	3%	4%	34,051	60,374	+77%
Hinduism	2%	4%	28,622	69,519	+143%
Buddhism	4%	4%	65,930	73,691	+12%
Judaism	1%	1%	4,460	4,825	+8%
Faith pool			2,918,121	2,565,802	-12%
No Religion	26%	44%	955,749	2,125,469	+122%
Total Population			4,332,675	5,156,110	+19%

Christianity lost its gravitational pull



Population in Queensland by age and religious affiliation in 2021; ABS Census

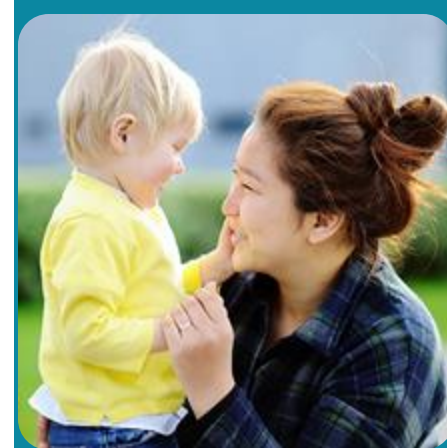
Volunteers

8. Volunteers

Distance from CBD	Volunteers		Total Queensland pop	
Major Cities	214,044	66%	1,624,106	68%
Inner Regional	57,173	18%	395,228	17%
Outer Regional	46,515	14%	309,634	13%
Remote	4,037	1%	23,152	1%
Very Remote	4,198	1%	19,817	1%
Total	325,967	100%	2,371,937	100%

Rank	Highest no. of persona	Count
1.	The Hills District	2007
2.	Coorparoo	1684
3.	The Gap	1639
4.	Noosa Hinterland	1571
5.	West End	1515
6.	Nambour	1508
7.	Ashgrove	1489
8.	Newstead - Bowen Hills	1484
9.	Gympie Surrounds	1396
10.	Cashmere	1372

Rank	Highest share of persona	Share
1.	The Hills District	17%
2.	Coorparoo	17%
3.	The Gap	22%
4.	Noosa Hinterland	16%
5.	West End	17%
6.	Nambour	15%
7.	Ashgrove	23%
8.	Newstead - Bowen Hills	12%
9.	Gympie Surrounds	16%
10.	Cashmere	14%

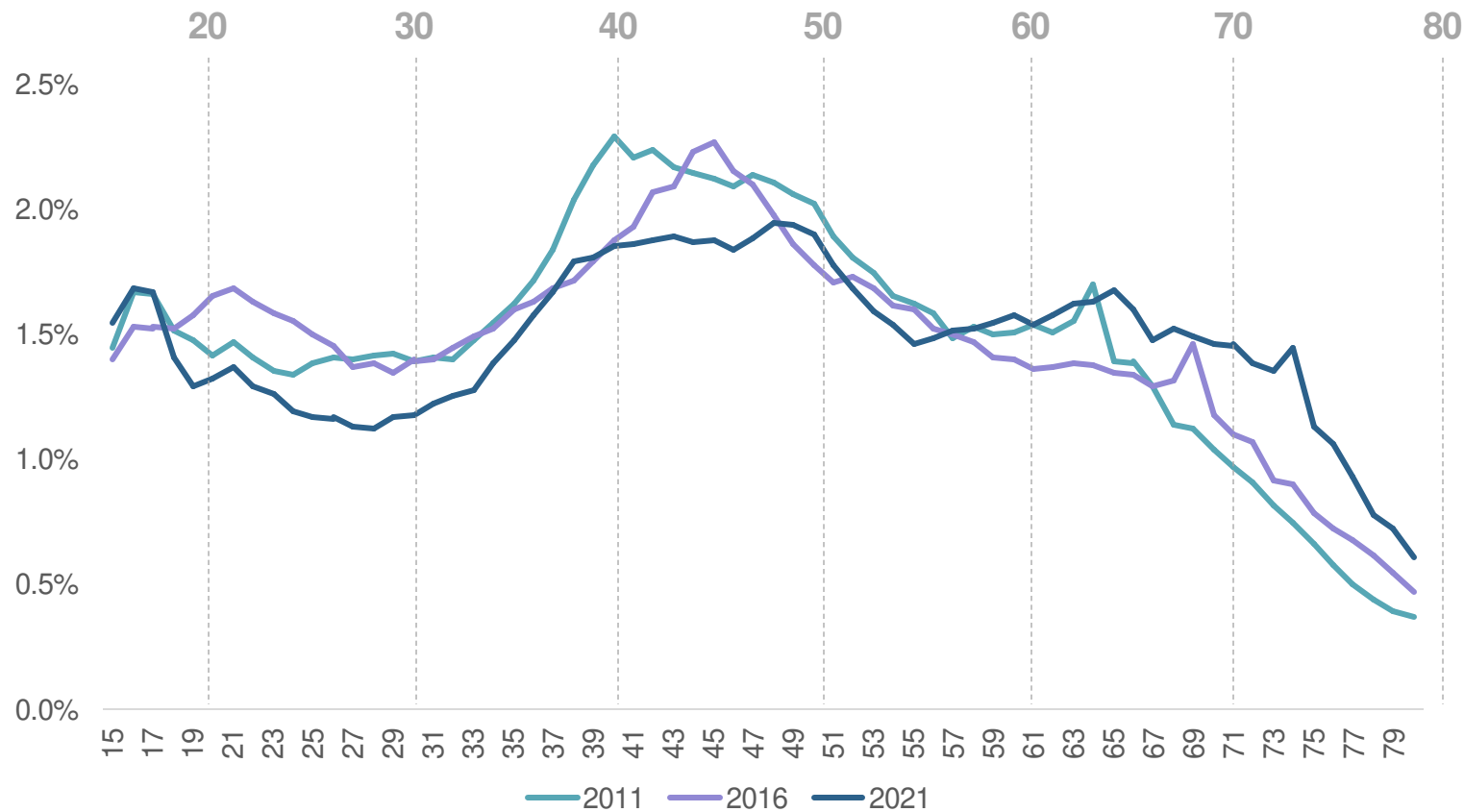


INSIGHTS

Persons who did unpaid volunteer work between the ages of 25-59.

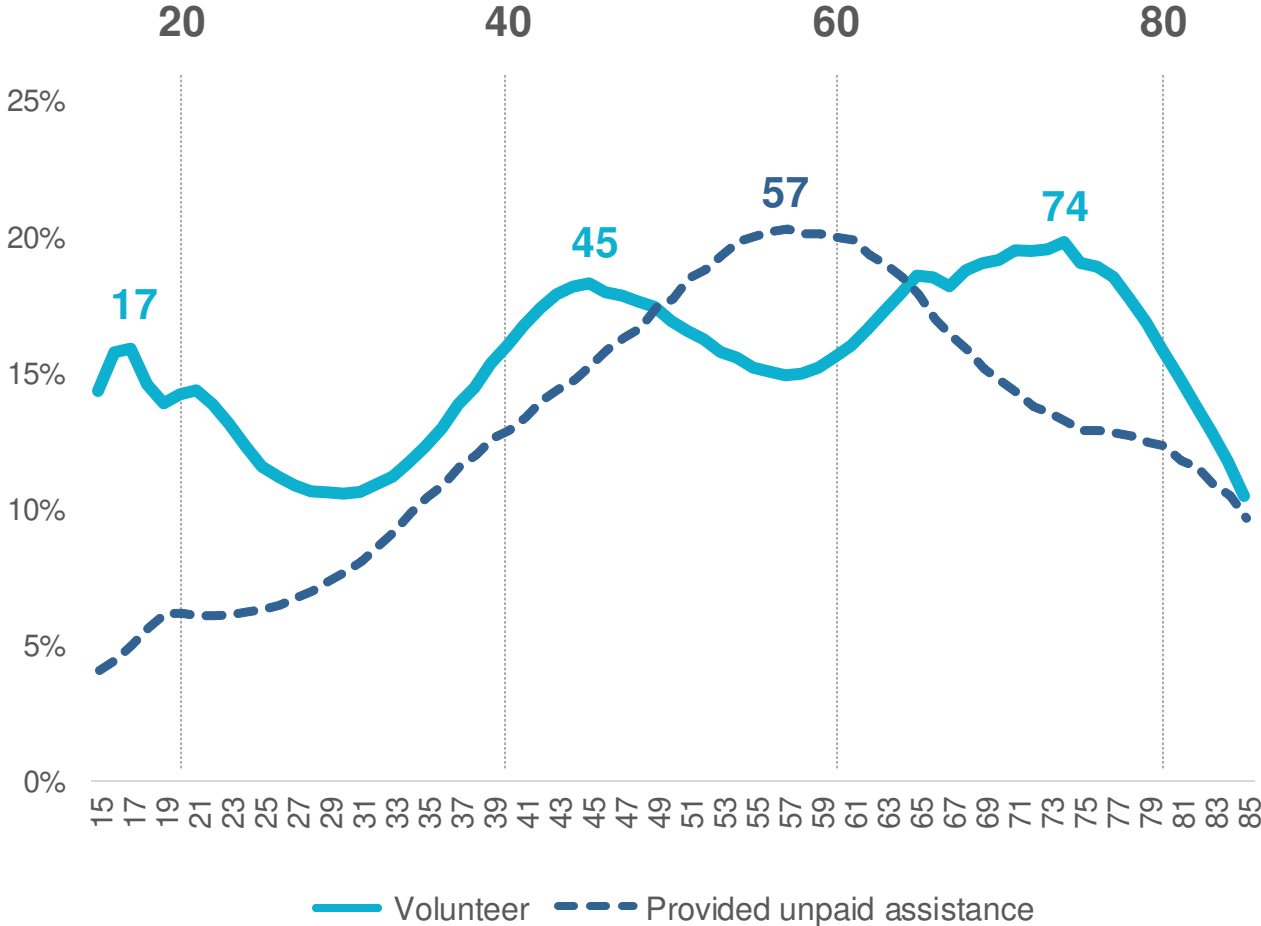
Volunteers mirror the general population distribution.

Big growth in the volunteering spike age group (40s)



Age profile of Volunteers in Queensland 2011-2021; ABS Census

Australians do their fair share and are willing to help out



Single income couples

9. Single Income Couple Families

Distance from CBD	Healthcare workers		Total Queensland pop	
Major Cities	203,930	72%	1,624,106	68%
Inner Regional	46,147	16%	395,228	17%
Outer Regional	30,859	11%	309,634	13%
Remote	2,111	1%	23,152	1%
Very Remote	1,689	1%	19,817	1%
Total	284,736	100%	2,371,937	100%

Rank	Highest no. of persona	Count	Rank	Highest share of persona	Share
1.	Calamvale - Stretton	2109	1.	Barcaldine - Blackall	35%
2.	Redbank Plains	1982	2.	Far Central West	32%
3.	Springfield Lakes	1928	3.	Roma Surrounds	31%
4.	Forest Lake - Ellen Grove	1709	4.	Far South West	30%
5.	North Lakes	1672	5.	Croydon - Etheridge	29%
6.	Murrumba Downs - Griffin	1560	6.	Longreach	29%
7.	Coomera	1464	7.	Northern Highlands	28%
8.	Inala - Richlands	1463	8.	Balonne	26%
9.	Sunnybank Hills	1435	9.	Banana	26%
10.	Kallangur	1432	10.	Miles - Wandoan	25%

Data sourced from ABS Census 2021 based on SA2 boundaries

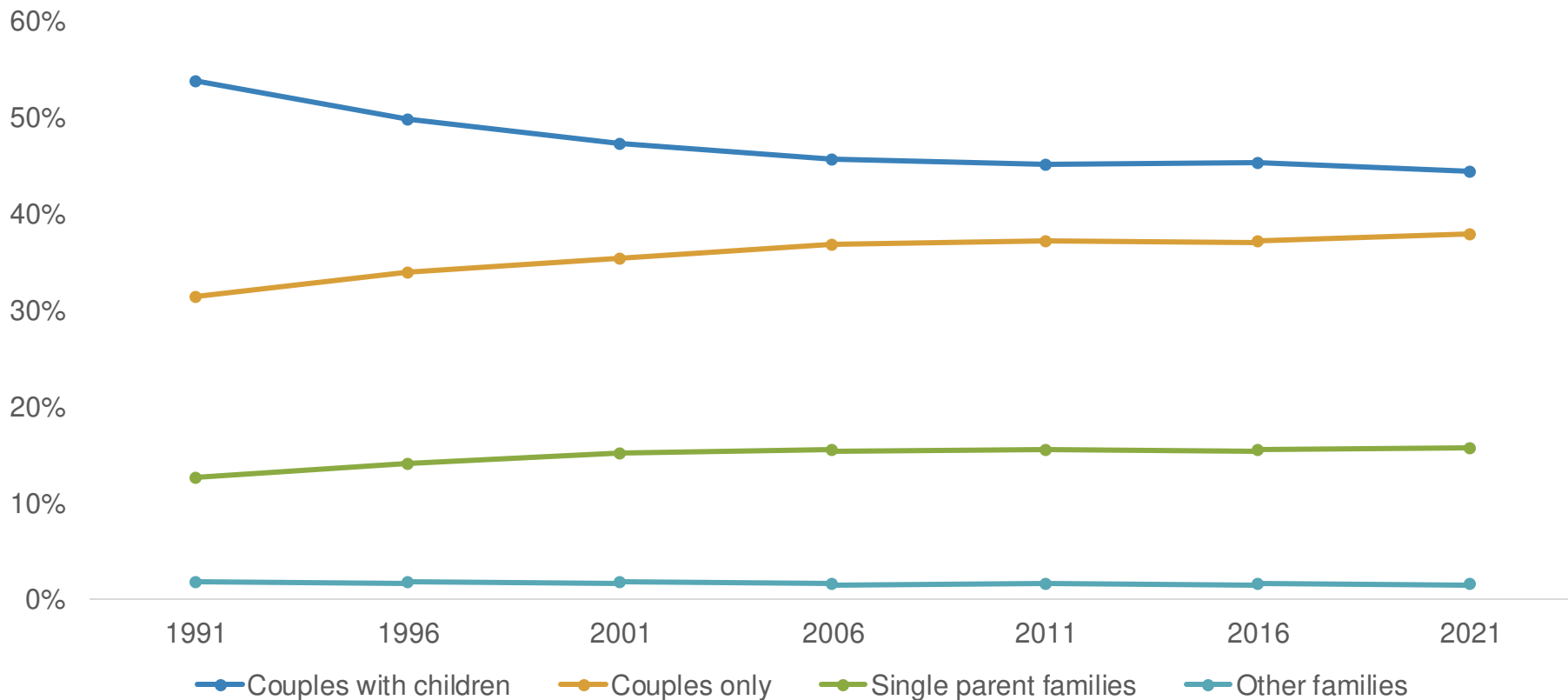


Healthcare workers

Workers between aged 25-49, employed in the Hospital, Medical & Other Health Care Services industries (2d level)

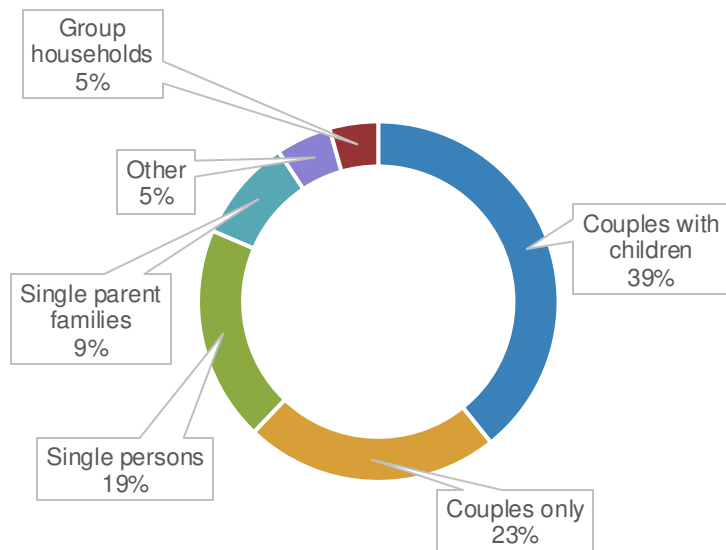
Healthcare workers closely mirror the general population distribution but cluster around centrally located medical facilities. This group will see strong growth in the coming decade

Who to target? Fewer traditional families, more couples, stable single parent families

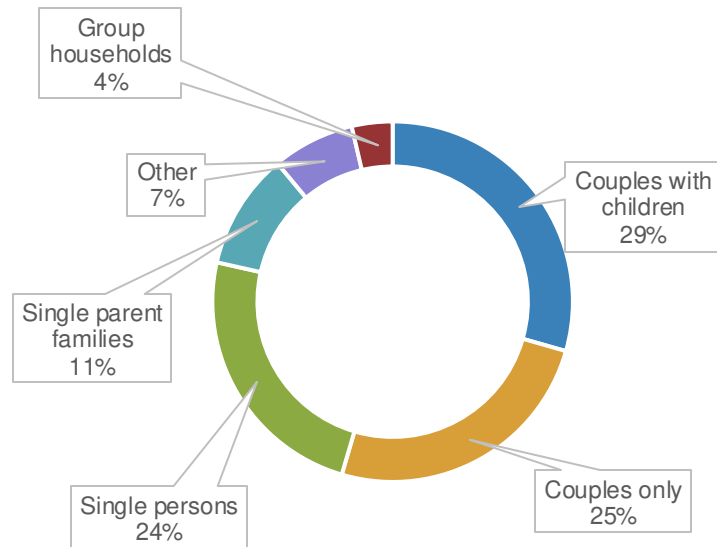


Could single person households act as foster carers?

Household types, 1991



Household types, 2021



- Couples with children
- Couples only
- Single persons
- Single parent families
- Other
- Group households

- Couples with children
- Couples only
- Single persons
- Single parent families
- Other
- Group households

TDG Team & Disclaimer

Your Contacts At The Demographics Group



**Sarah
Read**
*Director of
Consulting*

sarah@tdgp.com.au
0421 619 162



**Simon
Kuestenmacher**
*Director of
Research*

simon@tdgp.com.au
0499 881 983



**Hari Hara
Priya Kannan**
*Data
Scientist*

hari@tdgp.com.au
0412 728 577



© 2024 Business Demographics Pty Ltd, trading as The Demographics Group (“TDG”). All rights reserved.

The use of any TDG name or logo are prohibited without TDG’s prior written consent.

The information contained in this document has been prepared for the purpose set out in the agreement between PeakCare Queensland Inc (PeakCare) and TDG dated 28 March 2024. Notwithstanding the terms of the agreement, TDG makes no warranties or representations that the use of the information in the report by PeakCare will lead to any particular outcome for PeakCare. This report was not prepared for the purpose of legal or accounting advice and must not be relied on as such. Legal and accounting advice should be sought from an appropriately qualified expert.

Although we endeavour to provide accurate and timely information, we do not guarantee that such information is accurate, complete or reliable as of the date it is received or that it will continue to be accurate, complete or reliable in the future. This report will not reflect any data or circumstances which occur, or are collated, after the date of this report and TDG is under no obligation in any circumstance to update this document, in either oral or written form, for events occurring after the final deliverable.

To the extent permissible by law, TDG shall not be liable for any errors, omissions, defects or misrepresentations in the information or for any loss or damage suffered by persons, including third parties, who may use or rely on such information (including (without limitation) for reasons of negligence, negligent misstatement or otherwise).

TDG have indicated within this report the sources of the information provided. TDG has not sought to independently verify those sources unless otherwise noted within the document.

This document should not be used or relied upon by any third party. This document is subject to copyright. TDG acknowledged that PeakCare has the ongoing right to use the content of the report publicly in the following ways - in media activities, in external and internal presentations, on our website and blog and on other social media platforms.